

Original research paper

A STATISTICAL APPROACH TO ESTIMATE WIND SPEED DISTRIBUTION IN IBADAN, NIGERIA.

K.O. Rauff, ^{*1} E.F. Nymphas, ²

¹Department of Physics, Federal University, Kashere, P.M.B. 0182, Gombe, Gombe State,
Nigeria.

² Department of Physics, University of Ibadan, Oyo State, Nigeria

* E-mail: rauffkazeem@fukashere.edu.ng

ABSTRACT

In this paper, the wind energy potential in Ibadan is statistically analyzed using daily wind speed data for 10 years (1995-2004) obtained from the International Institute of Tropical Agriculture (IITA) and 1 year (2006) obtained from Nigeria Micro-scale Experimental (NIMEX) Ibadan, Nigeria. The statistical wind data set was analyzed using Weibull distributions in order to investigate the Weibull shape and scale parameters. The daily, monthly, seasonal, and yearly wind speed probability density distributions were modeled using Weibull Distribution Function. The measured annual mean wind speed was found to be 0.76 m/s and the total extractable wind power has been estimated as 0.33 kW at IITA while the annual mean wind speed ranged between 0.74 m/s, 1.02 m/s, 1.16 m/s and 1.34 m/s at (3m, 6m, 12m and 15m) respectively at NIMEX. The maximum extractable annual wind power density value of $0.90W / m^2$ for the whole year at IITA and $5.61W / m^2$ at the highest height of 15m at NIMEX indicated that, Ibadan can be classified as a low wind energy region and it belongs to the wind power class 1, since the density is less than $100W / m^2$. It is concluded that at both sites, the highest wind speed that prevailed in Ibadan is March and the location can be explored for wind power.

Keywords: *Wind Energy, Renewable Energy, Wind Speed, Weibull Distribution, Wind Power, Fossil*

1.0 INTRODUCTION

Wind speed is a variable which is affected by lots of factors such as geometric shapes, roughness and elevation of ground surface [1]. Therefore, the easiest and most direct method of obtaining wind speed distribution in different locations is to set up a measurement station at each location [2]. Generally, the wind speed is characterized by a high variability both in space and time. It is therefore very important to describe the variation in wind speed for optimizing the design of the systems in order to reduce energy generating costs [3]. In recent

33 times, numerous studies have been carried out to access the wind speed characteristics and
34 associated wind energy potentials in different parts of the world [2].

35 Renewable energy sources have attracted increasing attention from all over the world due to
36 their almost inexhaustible and non-polluting characteristics [4]. In Nigeria today, a great
37 percentage of the general population reside in rural areas where they do not have access to the
38 nation's electric power source. In view of this, people have resorted to migrating back to the
39 urban areas, where they receive the benefits of such amenities.

40 The major source of electricity in Nigeria is hydropower, which is usually restricted to the
41 generation of shaft power from falling water [5]. The Power Holding Company of Nigeria
42 (PHCN) is charged with the responsibility of managing the nation's Hydroelectric Power
43 (HEP) station across the River Niger in Kainji. However the company has been noted for
44 unreliable power supply characterized by low voltage and incessant power cuts, often without
45 warning or even apologies to consumers [6]. The unreliability of this situation has led to
46 search for a more viable energy source for Nigeria. The adoption of power generating sets has
47 rather worsened the situation because it constitutes environmental noise and pollution.

48 Wind energy has been noted as an alternate source of energy that can be exploited to meet the
49 needs of Nigeria and other developing nations [7]. Wind energy as one of these important
50 sources is perhaps the most suitable, most effective and inexpensive sources for electricity
51 production. As a result it is vigorously pursued in many countries. In recent times, there has
52 been a continual decline in supply of conventional energy due to the depletion of the national
53 reserve while the demand increases every day. In statistical modeling of the wind speed
54 variation, much consideration has been given to the Weibull two parameter (shape parameter
55 k and scale parameter c) functions because it has been found to fit a wide collection of wind
56 data [2].

57 **2.0 MATERIALS AND METHODS**

58 The daily wind speed data used in this study were obtained from Nigeria Mesoscale
59 Experimental (NIMEX) site, University of Ibadan (7.38°N , 3.98°E) for the period of one
60 year (2006) and from International Institute of Tropical Agriculture, IITA (7.43°N and 3.9°
61 E), Ibadan, for the period of ten years (1995-2004). The wind speed data was measured
62 continuously with a cup generator anemometer at a hub height of 3, 6, 12, 15 meters
63 respectively at NIMEX site and 2 meters at IITA site above the ground level. The daily mean
64 speeds were computed as the average of the speeds for each day.

65 **2.1 COMPUTATION OF WEIBULL PARAMETERS OF THE WIND SPEED**

66 In statistical analysis of wind speed variation, the Weibull two parameters (shape parameter
67 k and scale parameter c) functions have been widely applied by many researchers. The
68 probability density function of the Weibull distribution is given as [1]:

$$69 \quad f(v) = \left(\frac{k}{c}\right) \left(\frac{v}{c}\right)^{k-1} \exp\left[-\left(\frac{v}{c}\right)^k\right] \quad (1)$$

70 where $f(v)$ is the probability of observing wind speed, v , k is the dimensionless Weibull
 71 shape parameter and c is the Weibull scale parameter with units of speed ms^{-1} , which could
 72 be related to the average wind speed through the shape factor k , which describes the
 73 distribution of the wind speeds. The relationship between the Weibull scale factor, c , Weibull
 74 shape factor, k and average wind speed v_m is given as [1]:

$$75 \quad v_m = c\Gamma\left(1 + \frac{1}{k}\right) \quad (2)$$

76 where Γ is usual gamma function.

77 The parameter k and c may be estimated by the linear regression of the cumulative Weibull
 78 distribution given as [1]:

$$79 \quad F(v) = 1 - \exp\left[-\left(\frac{v}{c}\right)^k\right] \quad (3)$$

80 where $F(v)$ is cumulative Weibull distribution function.

81 **2.2 ESTIMATION OF WIND POWER DENSITY**

82 The available power in the wind flowing at mean speed v_m through a wind rotor blade with
 83 sweep area at any given site can be estimated as [1]:

$$84 \quad p(v) = \frac{1}{2} \rho A v_m^3 \quad (4)$$

85 where $p(v)$ is the wind power (Watt), ρ is the air density at site $= 1.21 kgm^{-3}$, A is the swept
 86 area of the rotor blades m^{-2} and v_m is the wind speed at that location ms^{-1} .

87 The wind density (wind power per unit area) based on the Weibull Probability Density
 88 Function can be calculated as [8]:

$$89 \quad p_w(v) = \frac{p(v)}{A} = \frac{1}{2} \rho v_m^3 \quad (5)$$

$$90 \quad p_w(v) = \frac{1}{2} \rho c^3 \left(1 + \frac{3}{k}\right) \quad (6)$$

$$91 \quad k = \left(\frac{\sigma}{v_m}\right)^{-1.068} \quad (7)$$

92 where $p_w(v)$ is the wind power density Wm^{-2} and σ is the standard deviation.

93 According to [9]:

$$c = \frac{v_m}{\Gamma\left(1 + \frac{1}{k}\right)} \quad (8)$$

3.0 RESULTS AND DISCUSSIONS

Figure 1 shows the daily mean wind speed variation in Ibadan over the period of 10 years from 1995-2004, while the yearly mean wind speed, standard deviation and power available are presented in Table 1. It is seen in Table 1 that the highest yearly wind speeds occurred in 1996 while the minimum occurred in 2002 as shown from Figure 1. The monthly variation of the wind speed is presented in Table 2. It is seen that the highest monthly wind speeds occurred in February (0.90 m/s), March (1.07 m/s), April (0.96 m/s) and May (0.88 m/s) respectively for the whole year, while the minimum monthly wind speeds occurred in October (0.54 m/s) and November (0.56 m/s).

The monthly standard deviation, mean wind speed, Weibull distribution parameters, predicted wind power density, cumulative frequency and available power for the whole year are shown in Table 3. It can be seen that the shape parameter (k) varies between 1.94 and 3.69, while the scale parameter (c) ranges from 0.61 to 1.20 m/s. A high variation in shape parameter was observed compared with that of scale parameter.

Table 1: Yearly Mean Wind Speed, Standard Deviation and wind power in Ibadan between 1995 and 2004 (IITA).

Year	v_m	σ	P (kW)
1995	0.95	0.24	0.65
1996	1.21	0.23	1.35
1997	1.10	0.26	1.01
1998	0.92	0.42	0.59
1999	0.83	0.42	0.43
2000	0.81	0.36	0.40
2001	0.46	0.26	0.07
2002	0.40	0.26	0.05
2003	0.41	0.27	0.05
2004	0.53	0.23	0.11
Yearly	0.76	0.30	0.33

where V_m is mean wind speed and σ is the standard deviation.

Table2: Monthly and Yearly Wind Speed and Standard Deviation from 1995-2004 (IITA).

month	par	1995	1996	1997	1998	1999	2000	2001	2002	2003	2004	whole Yr
Jan	V_m	0.65	0.83	1.24	0.97	0.96	0.85	0.29	0.18	0.40	0.23	0.66
	σ	0.21	0.23	0.27	0.45	0.33	0.38	0.55	0.20	0.17	0.14	0.29
Feb	V_m	1.01	1.20	1.15	1.22	1.03	0.89	0.73	0.28	0.98	0.54	0.90
	σ	0.21	0.23	0.32	0.31	0.30	0.45	0.36	0.15	0.75	0.65	0.37
Mar	V_m	1.20	1.50	1.44	1.34	0.99	1.34	1.00	0.80	0.67	0.39	1.07
	σ	0.28	0.24	0.32	0.31	0.29	0.39	0.27	0.52	0.36	0.16	0.31
Apr	V_m	1.14	1.12	1.18	1.50	1.04	1.48	0.79	0.35	0.43	0.53	0.96
	σ	0.32	0.31	0.29	0.34	0.37	0.40	0.50	0.29	0.31	0.30	0.34
May	V_m	0.97	1.27	1.08	1.14	0.90	1.02	1.17	0.42	0.54	0.33	0.88
	σ	0.27	0.24	0.23	0.28	0.37	0.63	0.50	0.25	0.29	0.17	0.32
Jun	V_m	0.98	1.43	1.11	0.90	0.89	0.87	0.36	0.46	0.34	0.25	0.76
	σ	0.26	0.22	0.23	0.29	0.39	0.51	0.19	0.26	0.23	0.16	0.27
Jul	V_m	1.12	1.40	1.26	0.94	0.85	0.86	0.29	0.41	0.23	0.32	0.77
	σ	0.26	0.22	0.26	0.36	0.50	0.53	0.10	0.32	0.17	0.17	0.29
Aug	V_m	1.08	1.36	0.86	1.06	1.00	0.50	0.28	0.52	0.46	0.36	0.75
	σ	0.25	0.23	0.26	0.49	0.48	0.21	0.13	0.35	0.33	0.27	0.30
Sep	V_m	1.04	1.21	1.19	0.64	0.46	0.52	0.18	0.38	0.27	0.87	0.68
	σ	0.24	0.19	0.26	0.49	0.39	0.25	0.12	0.25	0.26	0.24	0.27
Oct	V_m	0.82	1.08	0.99	0.25	0.35	0.50	0.13	0.24	0.23	0.82	0.54
	σ	0.22	0.25	0.21	0.82	0.68	0.23	0.08	0.15	0.12	0.15	0.29
Nov	V_m	0.59	1.06	0.86	0.59	0.68	0.42	0.14	0.32	0.14	0.82	0.56
	σ	0.15	0.22	0.21	0.31	0.53	0.14	0.08	0.18	0.11	0.18	0.21
Dec	V_m	0.72	1.09	0.89	0.30	0.85	0.44	0.14	0.40	0.28	0.87	0.60
	σ	0.20	0.17	0.31	0.58	0.41	0.16	0.19	0.25	0.14	0.19	0.26
Year		0.95	1.21	1.1	0.92	0.83	0.81	0.46	0.4	0.41	0.53	0.76
		0.24	0.23	0.26	0.42	0.42	0.36	0.26	0.26	0.27	0.23	0.3

Table 3: Monthly Weibull Shape Parameter k, and Scale Parameter c, Mean Wind Speed, Power available and Power Density, 1995-2004 (IITA).

Month	σ	v_m	Scale Factor C	Shape Factor k	Power Density W/m ² , P	Available power (kW)
Jan	0.29	0.66	0.74	2.38	0.57	0.22
Feb	0.37	0.90	1.02	2.57	1.40	0.56
Mar	0.31	1.07	1.20	3.69	1.94	0.93
Apr	0.34	0.96	1.08	2.99	1.54	0.67
May	0.32	0.88	1.00	2.92	1.22	0.52
Jun	0.27	0.76	0.86	2.98	0.77	0.33
Jul	0.29	0.77	0.86	2.83	0.82	0.35

Aug	0.30	0.75	0.84	2.64	0.78	0.32
Sep	0.27	0.68	0.76	2.68	0.58	0.24
Oct	0.29	0.54	0.61	1.94	0.35	0.12
Nov	0.21	0.56	0.64	2.84	0.33	0.13
Dec	0.26	0.62	0.70	2.52	0.45	0.18
Total	0.30	0.76	0.86	2.75	0.90	0.33

Table 4: Seasonal Weibull Distribution Parameters, Mean Wind Speed, Wind Power Density and Power Available in Ibadan between 1995 and 2004 (IITA).

Season	k	c (m/s)	v_m	P (W/m^2)	P (kW)
Rainy	2.83	0.87	0.77	0.93	0.40
Dry	2.49	0.82	0.73	0.82	0.32
Whole Year	2.75	0.86	0.76	0.90	0.33

In order to determine the Weibull parameters for the seasonal mean wind speed, the months are divided into two seasons identified as follows:

(a) Rain season: March to November.

(b) Dry season: December to February

The mean wind speed predicted by the Weibull Probability Density Function for rainy and dry seasons are 0.77 and 0.73 m/s, the power available are 0.40 and 0.32 kW, while the power density predicted are 0.93 and 0.82 Wm^{-2} respectively. The mean wind speed and power availability was slightly higher during the rainy season than the dry season.

Table 5: Monthly Probability density distribution of the measured wind speed from Weibull distribution function IITA

Month	v_m	$f(v)$
Jan	0.66	0.03
Feb	0.90	0.02
Mar	1.07	0.00
Apr	0.96	0.01
May	0.88	0.01
Jun	0.76	0.02
Jul	0.77	0.02
Aug	0.75	0.02
Sep	0.68	0.02
Oct	0.54	0.05
Nov	0.56	0.03
Dec	0.62	0.03
Total	0.76	0.02

158 **Table 6:** Yearly Probability Density Distribution of the Measured Wind Speed from Weibull
159 Distribution Function IITA

Year	v_m	σ	Shape Factor k	Scale Factor c	f(v)
1995	0.945	0.239	4.340	0.768	0.085
1996	1.213	0.229	5.943	1.038	0.080
1997	1.103	0.265	4.588	0.905	0.084
1998	0.918	0.419	2.310	0.641	0.101
1999	0.834	0.420	2.079	0.563	0.104
2000	0.808	0.357	2.394	0.570	0.100
2001	0.458	0.256	1.863	0.298	0.108
2002	0.396	0.264	1.541	0.240	0.115
2003	0.413	0.270	1.578	0.253	0.114
2004	0.526	0.233	2.393	0.371	0.100
Total	0.762	0.295	2.752	0.559	0.096

160

161 **Table 7:** Monthly Wind Speed IITA.

	1995	1996	1997	1998	1999	2000	2001	2002	2003	2004
Jan	0.65	0.83	1.24	0.97	0.96	0.85	0.29	0.18	0.40	0.23
Feb	1.01	1.20	1.15	1.22	1.03	0.89	0.73	0.28	0.98	0.54
Mar	1.20	1.50	1.44	1.34	0.99	1.34	1.00	0.80	0.67	0.39
Apr	1.14	1.12	1.18	1.50	1.04	1.48	0.79	0.35	0.43	0.53
May	0.97	1.27	1.08	1.14	0.90	1.02	1.17	0.42	0.54	0.33
Jun	0.98	1.43	1.11	0.90	0.89	0.87	0.36	0.46	0.34	0.25
Jul	1.12	1.40	1.26	0.94	0.85	0.86	0.29	0.41	0.23	0.32
Aug	1.08	1.36	0.86	1.06	1.00	0.50	0.28	0.52	0.46	0.36
Sep	1.04	1.21	1.19	0.64	0.46	0.52	0.18	0.38	0.27	0.87
Oct	0.82	1.08	0.99	0.25	0.35	0.50	0.13	0.24	0.23	0.82
Nov	0.59	1.06	0.86	0.59	0.68	0.42	0.14	0.32	0.14	0.82
Dec	0.72	1.09	0.89	0.47	0.85	0.44	0.14	0.40	0.28	0.87
Yearly	0.95	1.21	1.10	0.92	0.83	0.81	0.46	0.40	0.41	0.53

162

163 The monthly and yearly wind speed probability density distributions are shown in Table 5 and Table 6
164 using equation 1. It is observed that the scale factor is directly related to the mean wind speed. The
165 higher the mean wind speed, the higher the scale factor parameter.

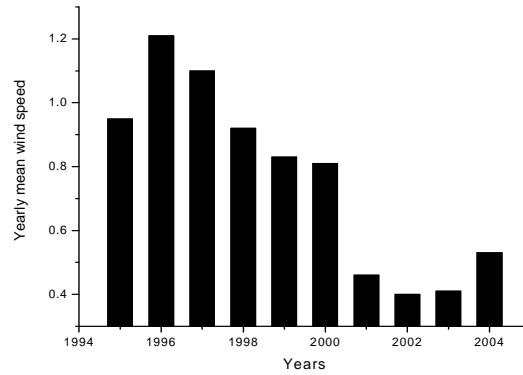


Figure1: Yearly mean wind speed distribution in Ibadan between 1995 and 2004 at 2m a.g.l. at IITA

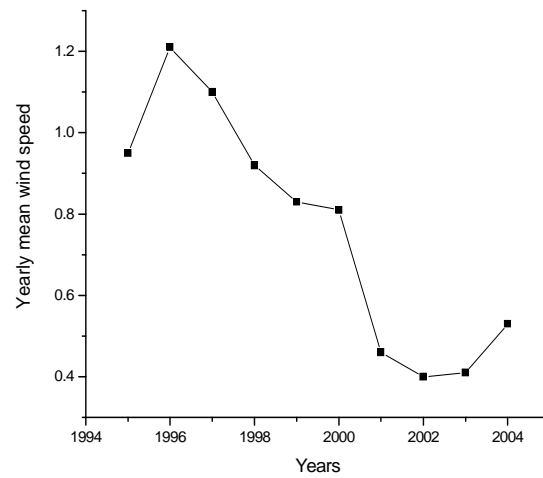
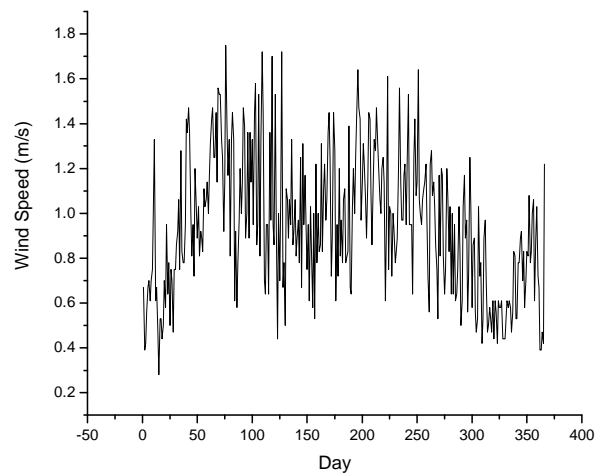


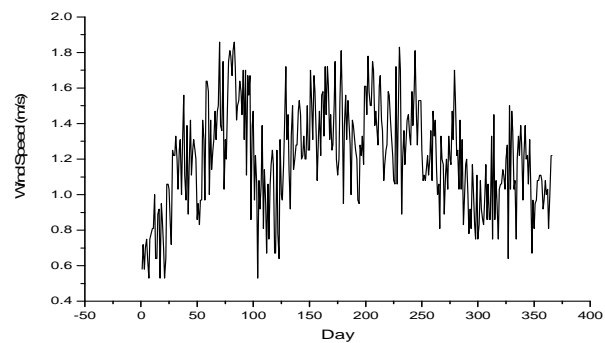
Figure 2: Annual Mean Wind Speed Distribution in Ibadan between 1995 and 2004 at 2m a.g.l. at IITA

174



175

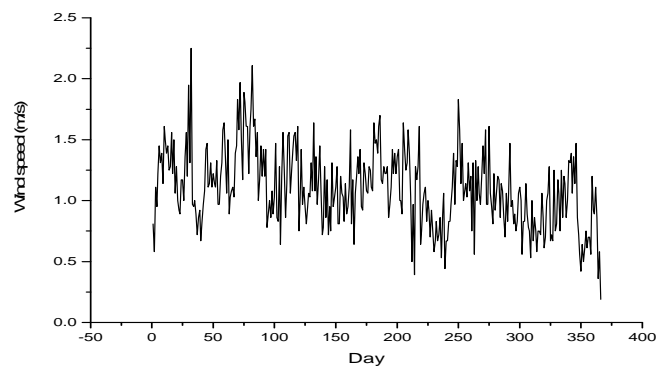
176 **Figure 3a:** Daily Mean Actual Wind Speed Variation at 2m a.g.l. at IITA in Ibadan in 1995.



177

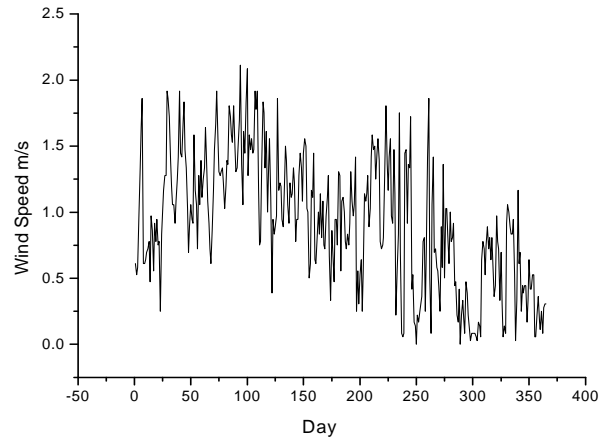
178 **Figure 3b:** Daily Mean Actual Wind Speed Variation at 2m a.g.l. at IITA in Ibadan in 1996.

179



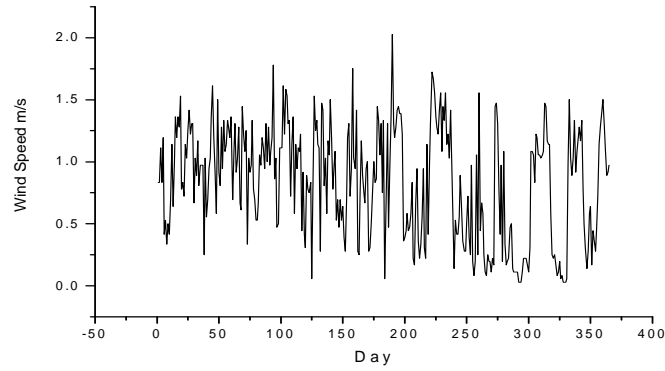
180

181 **Figure 3c:** Daily Mean Actual Wind Speed Variation at 2m a.g.l. at IITA in Ibadan in 1997.



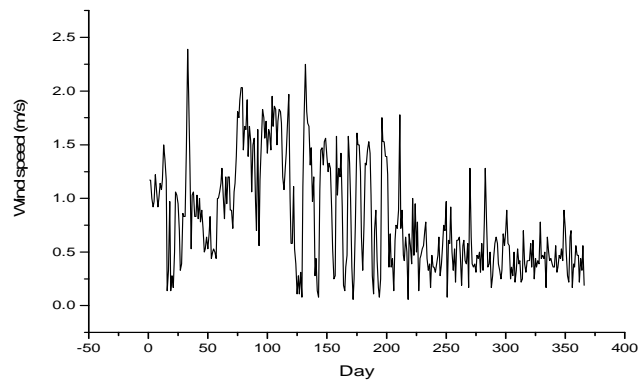
182

183 **Figure 3d:** Daily Mean Actual Wind Speed Variation at 2m a.g.l. at IITA in Ibadan in 1998.



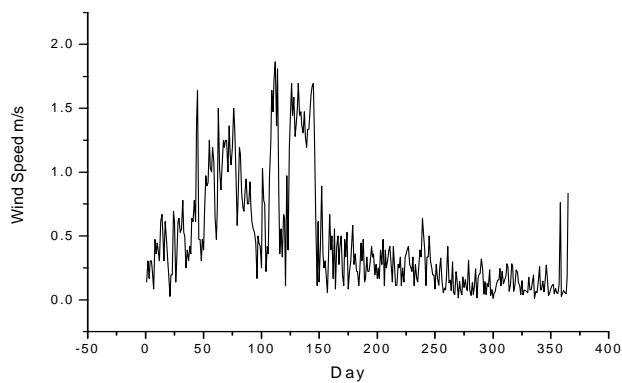
184

185 **Figure 3e:** Daily Mean Actual Wind Speed Variation at 2m a.g.l. at IITA in Ibadan in 1999.



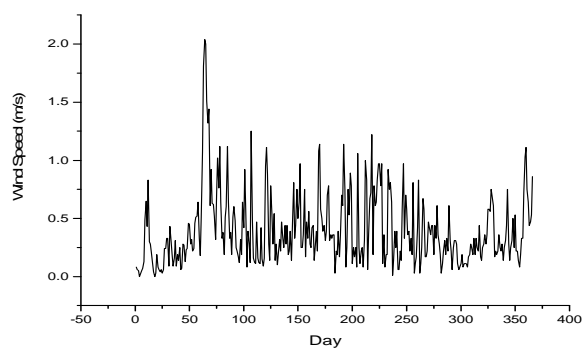
186

187 **Figure 3f:** Daily Mean Actual Wind Speed Variation at 2m a.g.l. at IITA in Ibadan in 2000.



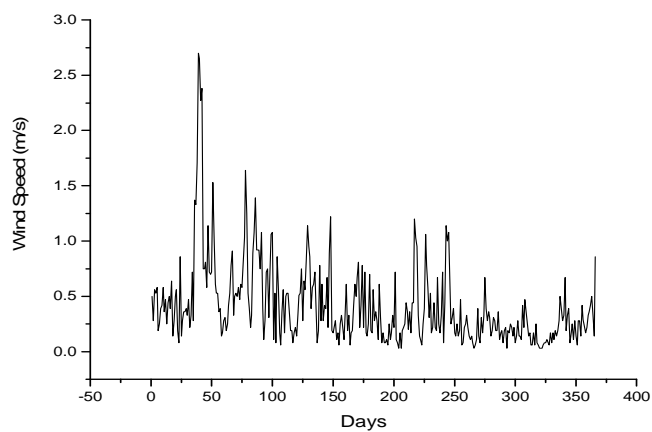
188

189 **Figure 3g:** Daily Mean Actual Wind Speed Variation at 2m a.g.l. at IITA in Ibadan in 2001.



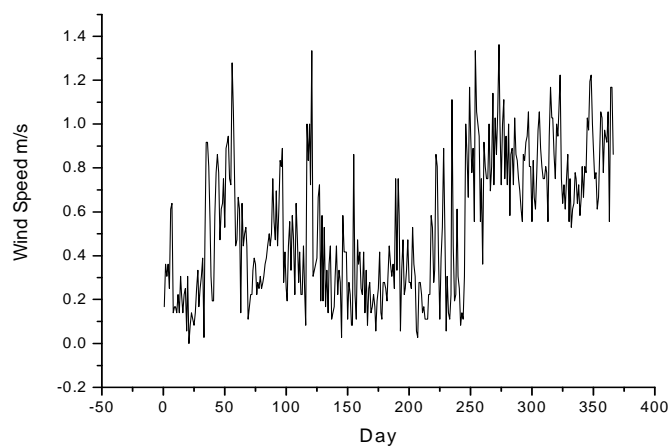
190

191 **Figure 3h:** Daily Mean Actual Wind Speed Variation at 2m a.g.l. at IITA in Ibadan in 2002.



192

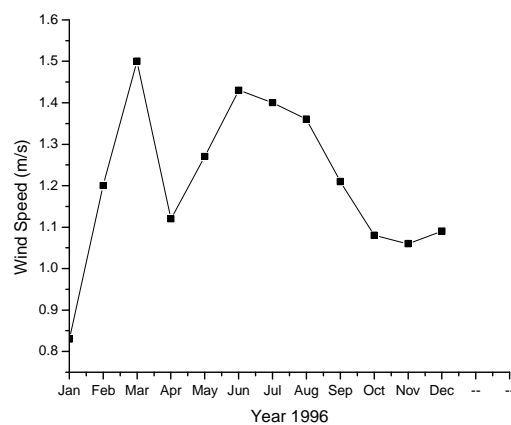
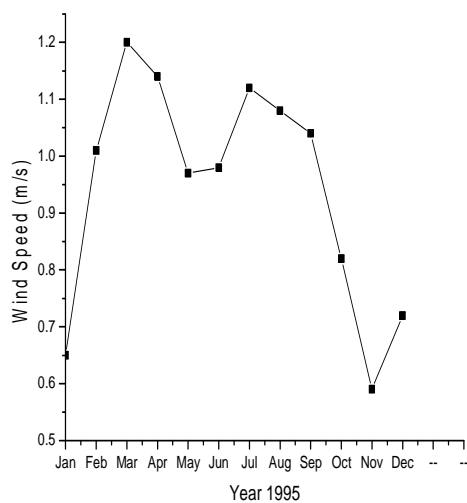
193 **Figure 3i:** Daily Mean Actual Wind Speed Variation at 2m a.g.l. at IITA in Ibadan in 200



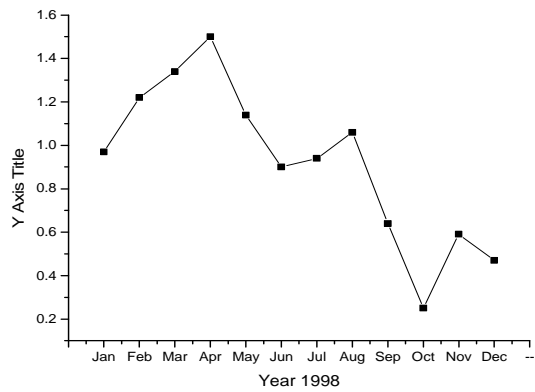
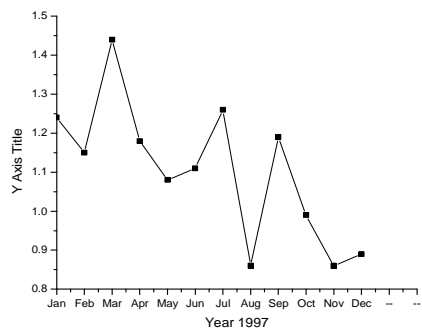
194

195 **Figure 3j:** Daily Mean Actual Wind Speed Variation at 2m a.g.l. at IITA in Ibadan in 2004.

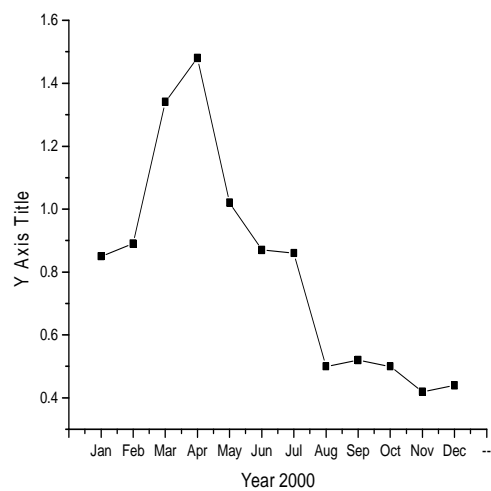
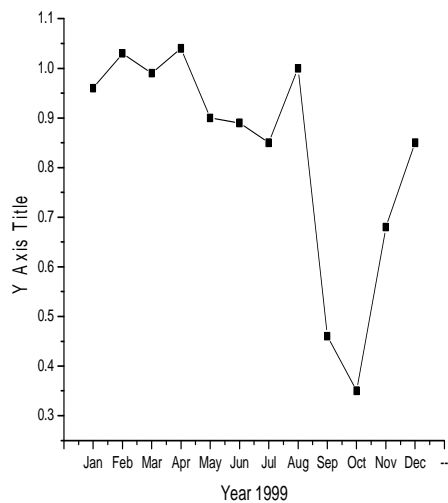
196



197



198



199

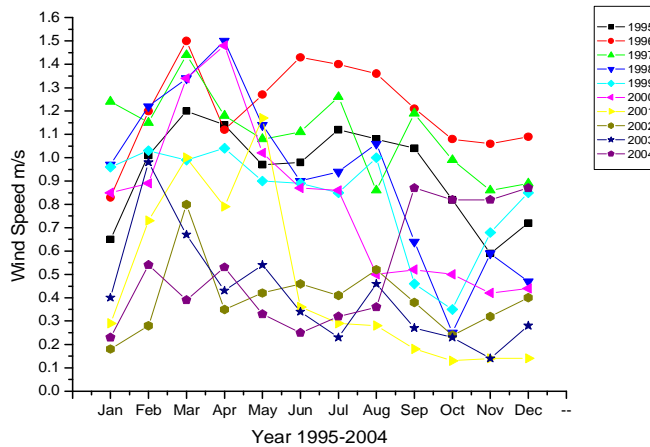
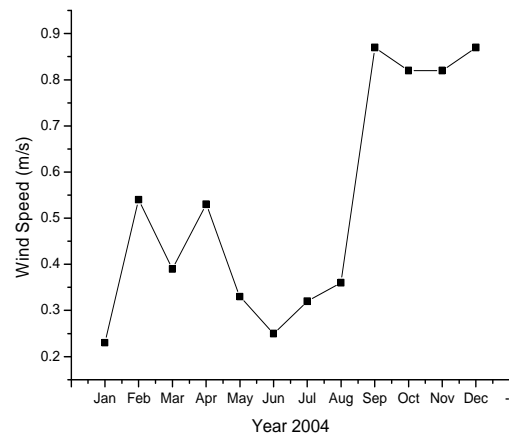
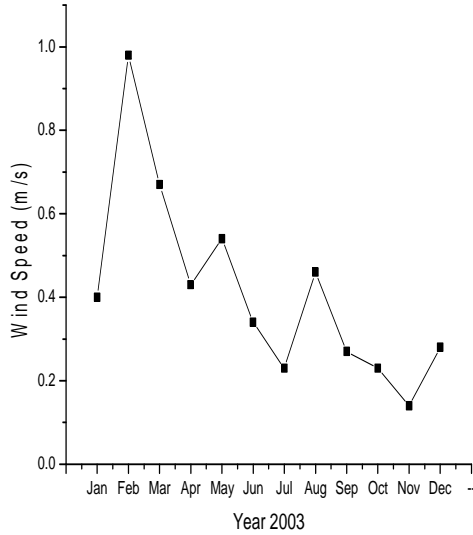
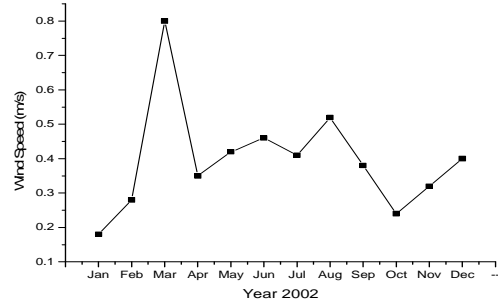
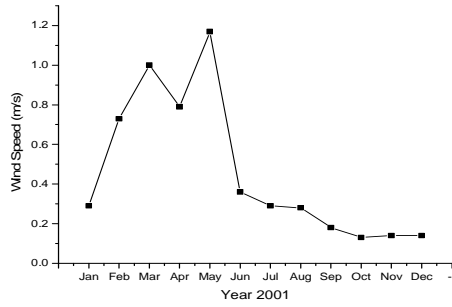


Figure 4: Monthly Wind Speed for the whole Year at 2m a.g.l. at IITA

Figures 1 and 3 show the yearly mean wind speed distributions plot for the year 1995-2004. The highest mean wind speed occurred in 1996 with wind speed 1.21 m/s. The wind speed fluctuates gradually from year to year for the period of observations. Figure 4 depicts the monthly wind speed IITA for the whole year, the minimum wind speed of 0.14 ms^{-1} occurred

208 in November in 2003 while the maximum wind speed of 1.50 ms^{-1} occurred in March, 1996
209 and April, 1998 respectively.

210 It is observed that the high wind speeds at (IITA) occurred between March and September
211 during the rainy season, these are due to the high amount of pressure gradient in the
212 atmosphere, the faster the difference in pressure, the faster the wind flows (from high to low
213 pressure) to balance out the variation. Effective utilization of wind power entails a detailed
214 knowledge for the wind characteristics at the specified location. The power densities
215 calculated from the measured Probability Density Distributions as presented in Table 3
216 showed that the minimum power densities occurred in October and November with 0.35 W/m^{-2}
217 $^{-2}$ and 0.33 W/m^{-2} respectively. It is noted that the highest power density values occurred in
218 March and April, with the maximum values of 1.94 W/m^{-2} and 1.54 W/m^{-2} respectively at
219 IITA.

220 The monthly averages of the wind speeds are represented in Table 7. Maximum monthly
221 profiles wind speeds vary between 1.50 ms^{-1} in March in 1996 and 1.50 ms^{-1} in April in
222 1998. It is observed from Table 8 that the highest monthly wind speeds occurred in March
223 ($1.17, 1.47, 1.72$ and 1.95 ms^{-1}) and April ($0.98, 1.28, 1.51$ and 1.84 ms^{-1}) while the minimum
224 monthly wind speeds occurred in October ($0.78, 1.12, 1.23$ and 1.43 ms^{-1}), November ($0.04,$
225 $0.76, 0.87$ and 0.28 ms^{-1}) and December ($0.40, 0.66, 0.26$ and 1.01 ms^{-1}) ranging between
226 their respective heights (level 1-4). It is observed that the means were not the same for each
227 month. The wind at a given site varies frequently in directions and its speed change rapidly
228 under gusting conditions [10]. It is also observed from Table 8 that the highest wind speed
229 occurred in March and September at the highest height (level 4) with the value 1.95 m/s
230 respectively, while the minimum wind speed of 0.04 ms^{-1} occurred in the month of
231 November at the lowest height (level 1). The overall mean wind speed at NIMEX site, Ibadan
232 was found to be $0.74, 1.02, 1.16$ and 1.34 ms^{-1} at their respective heights (level 1-4).

233 Figure 5 depicts the monthly wind speed distribution at all (NIMEX) levels. It is observed
234 that the readings were related to the levels of the equipment installed; i.e. the higher the level
235 of equipment installed, the higher the readings of the wind speed values. The maximum wind
236 speeds occurred during the rainy season between March and September while the minimum
237 mean wind speeds occurred between October and December. Wind speed data were not
238 available for the month of January and February.

239 It is observed that the available power and the power density are functions of the heights of
240 the equipment installed as shown in Table 9. The higher the height of the equipment installed,
241 the higher the values of the available power and power density obtained. A wind speed is
242 great at higher distance above the ground level because the effect of surface feature and
243 turbulence diminishes as the height increases.

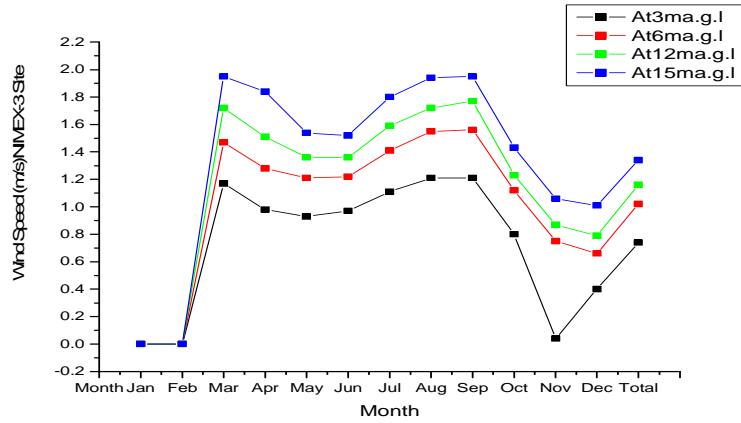


Figure 5: Monthly wind speed distribution NIMEX.

Table 8: Monthly Wind Speed and Standard Deviation NIMEX.

Months	Level 1		Level 2		Level3		Level 4	
	v_m	σ	v_m	σ	v_m	σ	v_m	σ
March	1.17	0.26	1.47	0.30	1.72	0.50	1.95	0.50
April	0.98	0.16	1.28	0.21	1.51	0.33	1.84	0.33
May	0.93	0.28	1.21	0.25	1.36	0.31	1.54	0.31
June	0.97	0.33	1.22	0.39	1.36	0.43	1.52	0.43
July	1.11	0.24	1.41	0.29	1.59	0.33	1.80	0.33
August	1.22	0.29	1.55	0.37	1.72	0.47	1.94	0.33
September	1.22	0.35	1.56	0.46	1.78	0.54	1.95	0.54
October	0.78	0.35	1.12	0.34	1.23	0.39	1.43	0.39
November	0.04	0.12	0.76	0.27	0.87	0.28	1.06	0.28
December	0.40	0.25	0.66	0.19	0.79	0.26	1.01	0.26
Total mean	0.74	0.22	1.02	0.26	1.16	0.32	1.34	0.32

Table 9: Average Wind Speed, Available Power, Mean Power and Weibull Parameters for the whole year NIMEX

	NIMEX Level 1	NIMEX Level 2	NIMEX Level 3	NIMEX Level 4
Power density, Wm^{-2}	1.24	2.59	5.52	5.61
Weibull scale parameter, c	0.83	1.15	1.80	1.51
Weibull shape parameter, k	3.03	5.43	3.43	3.39
Total wind speed	0.74	1.02	1.16	1.34
Yearly Available wind power(kW)	0.31	0.81	1.19	1.83

4.0 CONCLUSION

The wind speed data for Ibadan have been analyzed statistically based on Weibull Probability Distribution Function. The daily, monthly, seasonal and yearly Weibull probability Distribution parameters, mean wind speeds and available power for the location have been determined. Based on the analysis the following conclusions can be made:

1. The Annual Wind Power Density value of $0.90 W/m^{-2}$ for the whole year was obtained. The actual mean yearly wind speed of $0.76 m/s$ at IITA is obtained. The annual wind power density value of $5.61 Wm^{-2}$ and available power of $1.83 kW$ at the highest height (level 4) at NIMEX are also obtained which indicated that, Ibadan can be classified as a low wind energy region and it belongs to the wind power class 1, since the density value is less than $100 W/m^{-2}$.
2. It is concluded that the location is a good region for design of structures and building and agricultural purposes. It is also noted that, the highest wind speed prevails in Ibadan is in March.
3. The yearly power density value of $5.61 Wm^{-2}$ at NIMEX and $0.90 W/m^{-2}$ at IITA indicate that the level of power density is inadequate for connecting electrical and mechanical application.

NOMENCLATURE

$f(v)$	Probability of observing wind speed v ,
k	Dimensionless Weibull Shape Factor
c	Weibull Scale Parameter.
$F(v)$	Cumulative Distribution Function
v	Wind Speed (m/s)
v_m	Mean Value of the Wind Speed
Γ	Gamma Function
$p(v)$	Wind Power (W)
p_w	Wind Power Density (W/m^2)
ρ	Air Density at the site = $1.21(\text{kg/m}^3)$
A	Swept Area of the rotor blades (m^2)
σ	Standard Deviation
N	Number of Observations

REFERENCES

1. Akpinar, E.K. and S. Akpinar. Statistical Analysis of Wind Energy Potential on The Basis of the Weibull and Rayleigh Distributions for Agin-Elazig, Turkey. *Power & Energy*. 2004; 218:557-565.
2. Mayhoub, A.B. and A. Azzam. A Survey on the Assessment of Wind Energy Potential in Egypt. 1997; *Renewable Energy*. 11:235–247.
3. Akpinar E.K., Akpinar S. Statistical Analysis of Wind Speed Data Used In Installation Of Wind Energy Conversion Systems. *Energy Conversion and Management*. 2005; 46: 515–532.
4. Al-Buhairi, Mahyoub H. A Statistical Analysis of Wind Speed Data and an Assessment of Wind Energy Potential in Taiz-Yemen. *Ass. Univ. Bull. Environ. Res.* 2006; 9(2): 21 – 33.
5. Medugu, D.W. and D.I. Malgwi. A Study of Wind Potential: Remedy For Fluctuation of Electric Power in Mubi, Adamawa State Nigeria. 2005; *Nig.Journ.Phys.*17:40-45
6. Uchendu, O.A. Economic costs of Electricity Outages: Evidence from Sample Study of Industrial and Commercial Firms in Lagos Area of Nigeria. *CBN Economic and Financial Review*. 1993; 31:183-195.
7. Syed, Z.I., S.M. Nasir, and T. Bodshah, Frequency Distribution of Wind Speed of Quetta, Pakistan”. *Journal of Research (Science)*, 2004.

8. Jaramillo O.A., and Borja M.A. Wind Potential in La Venta, Mexico: An Analysis of Probability Distribution Functions. EWEC 2003, Proceedings of European Wind Energy Conference and Exhibition. Madrid (Spain): 2003; *John Wiley & Sons Ltd*.
9. Justus G.G. Methods for Estimating Wind Speed Frequency distribution". Journal of Applied meteorology, 1977; Vol.17, pp 350-353.
10. Algifri, A.H. Wind Energy Potential in Aden-Yemen. Renewable Energy. 1998; Vol. 13, No. 2, Pp. 255- 260.
11. Azami Zaharim, Siti Khadijah. Wind Speed Analysis in the East Coast of Malaysia. European Journal of Scientific Research. ISSN 1450-216X. 2009; Vol.32 No.2 (2009), pp.208-215.