

Original Research Article

MICROBIOLOGICAL PROPERTIES AND POPULATION DYNAMICS OF ATMOSPHERE IN MESOTIDAL ESTUARINE OF IKO RIVER, AKWA IBOM STATE, NIGERIA

ABSTRACTS

The microbiological properties and population dynamics of atmosphere in mesotidal estuarine of Iko River were investigated using standard microbiological and analytical procedures. The results revealed that the densities of culturable microbes in the estuary were influenced by tidal regimes. Their abundance varied between both tides as well as locations. Proportionately more fungal isolates were found in the estuarine air. There was a significant positive correlation ($r = 0.717$, $p < 0.05$) between the total heterotrophic bacteria in the atmosphere and wind speed, and between the fungi in the atmosphere and wind speed ($r = 0.799$) during high tide, indicating that increase in wind speed resulted in a corresponding effect in heterotrophic bacterial and fungal counts during high tide. A comparison of the relation between atmospheric temperature and microbial load showed little or no correlation ($r = 0.30$). The results of the air quality attributes of Iko Estuary during low tide and high tide showed that the quality of air in the estuarine environment was affected. The air quality in the estuarine environment was relatively "clean" and wholesome as most criteria gaseous pollutants (HCN, NO_2 , SO_2) except CO and SPM were below detectable limits and within the FMENV and WHO acceptable limits. However, the recorded levels of CO in some parts of the fishing settlement were above Federal Ministry of Environment (FMEnv) limits of 10.0 - 20.0ppm for daily average of 8 hourly values in Nigeria. The levels of atmospheric contaminants varied between low and high tides. The 2.0 ppm level of SPM recorded during high tide is higher than the FMEnv limits of 0.25ppm and is dangerous. The study has revealed significant emission of CO from the fish smoking activity which is common in the settlements. Geographic Information System (GIS) models of microbial communities revealed marked variation which ranged between tidal influences and microhabitats. The model revealed high concentrations of microorganisms in the north-west zone during both tides, while fungi were highly concentrated in the north-east zone during high tide. High species richness was observed, but with little or no tidal influences and isolates included known pathogenic species. The findings revealed that tidal bars and flats in shallow mesotidal estuary are subject to the action of tidal currents and waves. These complex events give rise to large variations in microbial communities in estuarine microhabitats which may be harnessed for effective environmental monitoring.

Keywords: Atmosphere, Microbiological properties, Estuarine, Iko River, Mesotidal, and Population Dynamics

1.0 Introduction

Attempts have been made to describe and explain spatial patterns of biological diversity and how these patterns change over time (1). The question has been "why do organisms live where they do" (2). The answer to many bio-geographical questions by microbiologists has brought about a recent resurgence in interest in microbial biogeography. This resurgence has been led to the advancements in molecular tools that allow us to survey uncultivated microbes in environment and a growing recognition that microbial taxa are the most biologically diverse taxa on earth.

However, we do know that a wide variety of microbial taxa exhibit bio-geographical patterns, microbial communities are not homogeneous across habitat- types, and within a given habitat microbial diversity can vary between locations separated by millimeters to thousands of kilometers. If microbial biogeography did not exist, there would be no spatial or temporal heterogeneity in microbial communities and global patterns in microbial communities and global patterns in microbial diversity could be predicted by studying the microbial community in a single location at a single point in time (3).

Microbes inhabit a wide range of habitats from hot springs to the deep subsurface and it is highly improbable that we would observe. Similar bio-geographical patterns exist across the full range of possible microbial habitats. It is also likely that all microbial taxa share similar bio-geographical pattern as the term "microbe" encompasses a broad array of taxa e.g bacteria, fungi, archaea, viruses and protists. Those are phylogenetically distinct and distinct with respect to their morphologies, physiologies, and life histories. Among these, bacterial biogeography is the most studied microbial dispersal and colonization. The key process shaping microbial biogeography and macro-ecological pattern is the dispersal of plants and animals (1). The extent of microbial dispersal is currently under debate. According to Finlay (4) who argued that any organism less than 1mm in size is likely to be ubiquitous due to an essentially unlimited capacity for long distance dispersal. This speculation is primary based on the assumption that the high local abundance of microbes (the large member of individuals per

57 unit area) increase the probability that individual microbes may travel a long distance and successfully colonize a
58 remote location simply by chance (5). If we combined a high probability of dispersal with the ability to survive the
59 long distance transport, we would expect few geographic constraints on microbial distribution (6).

60 Despite this long and rich history of study little is known about the biology of the atmosphere relative to
61 aquatic and terrestrial habitats. Technical limitations have hindered the study of the air. Low densities of micro-
62 organisms in the air can make even sensitive molecular analysis difficult because of the small amount of biological
63 material present in the air. Additionally, the lack of standardization in air collection and sample processing methods
64 complicate comparisons across studies (7). Owing to this lack of methodological standardization, it is unclear
65 whether large difference in density estimates among studies can be attributed to biological variation (8). Conceptual
66 limitations also continue to impact the advancement of our understanding of life in the atmosphere. Most of what is
67 known about airborne microorganisms is based on the assumption that the atmosphere is a conduit for the dispersal
68 of microbes rather than a dynamic habitat where microorganisms actively metabolized and reproduced in the
69 atmosphere.

70 Microorganisms may belong to one of these groups, those that are not metabolically active and actively
71 reproducing. Microbes can form inactive propagules (e.g. spores) that disseminates through the atmosphere,
72 however, for these organisms the atmosphere would not be a ‘‘habitat’’ in the conventional sense. Microbes that
73 remain metabolically active in the atmosphere but rarely reproduce are organisms for which the atmosphere serves
74 only as accidental dispersal mechanism. Despite past assumptions, residents of the atmosphere are likely to exist,
75 and that the atmosphere can act as habitat for microbial life. Sources of information shows that large portions of the
76 atmosphere have environmental characteristics consistent with other microbial habitats; that biogeochemical cycling
77 mediated by microbes occurs in the atmosphere, that at least some microbes found in the atmosphere are
78 metabolically active, and that residence times of microbes in the atmosphere are long enough that actively
79 reproducing residents could exist (9).

80 The atmosphere is not the most extreme microbial habitat. By several measures (pH, temperature,
81 ultraviolet (UV) radiation, resources and water availability) the atmosphere appears to be less extreme than many
82 other microbial habitats. The pH of clouds and rainwater ranges from 3 to a narrower range than that found in many
83 microbial habitats. Microbes have adapted to a much wider range of pH condition that occur in air, from highly
84 acidic conditions near pH 0 to extremely alkaline conditions up to pH – 11 (10). Temperature can vary widely
85 throughout the atmosphere, but includes ranges that are suitable for microbial life in the lower atmosphere up to
86 20km above the earth’s surface; average temperature decrease with altitude and range from an average of 15°C (at
87 sea level) to -56°C (at 20km). Many micro-organisms are capable of growth at temperatures near and below 0°C
88 with some communities reported to be metabolically active at temperatures as low as -18°C (11)

89 Resource availability in the atmosphere is not necessarily lower than that of many terrestrial or aquatic
90 environment in clouds and rainwater concentrations of nutrients (e.g. sulphate and nitrate) reach levels typical of
91 oligotrophic lakes (12). Numerous potential carbon sources are found in both clouds and the atmosphere, including
92 carboxylic acids and alcohols at concentrations up to 1mg-1 (12) as well as hydrocarbons at concentrations up to
93 4mg-1 (9) in addition to available resources for supporting heterotrophic metabolism the air provides a suitable
94 habitat for phototrophs. Pigmented micro-organisms found in the atmosphere could be using pigments for
95 photosynthesis. Gene sequences from putative photoautotrophs have been amplified from air samples (13) although
96 to our knowledge, no photoautotrophs have been isolated from atmosphere.

97 Biogeochemical cycling may occur in the atmosphere: if metabolically active microbes are present in the
98 atmosphere, they should leave chemical ‘‘footprint’’ of their metabolisms. For example, microbes are intimately
99 involved in biogeochemical transformations, and evidence for such transformations in the atmosphere would support
100 the hypothesis of a resident microbiota. Nitrogen cycling in clouds (including mineralization and nitrification) has
101 been demonstrated (14), suggesting the presence of metabolically active microbes. There is some evidence for
102 carbon cycling in clouds, although it is not as clear cut as the case for nitrogen, for example bacteria have been
103 isolated from clouds that are able to use organic compounds commonly found in clouds water, including acetate,
104 formate, succinate, lactate, formaldehyde and methanol as carbon sources (15). Bacterial end products of these
105 metabolic reactions are also commonly found in cloud water suggesting that these microbes are actively
106 transforming these compounds in clouds.

107 Although the majority of aerobiology has focused on community level abundance patterns, culture-based
108 research has provided a foundation for exploring taxa-level patterns, the study of taxa-level distributional pattern,
109 such as species geographical range, is central to biogeography. Culture-based work has begun to address
110 fundamental questions about the upper boundary of microbial geographical ranges in the atmosphere. Isolated
111 cultures of the common mould, *Penicillium notatum*, have been collected at an altitude of 77km, and the bacteria
112 *Micrococcus albus* and *Mycobacterium luteum* at an altitude of 70km. Culture-based studies have been used to

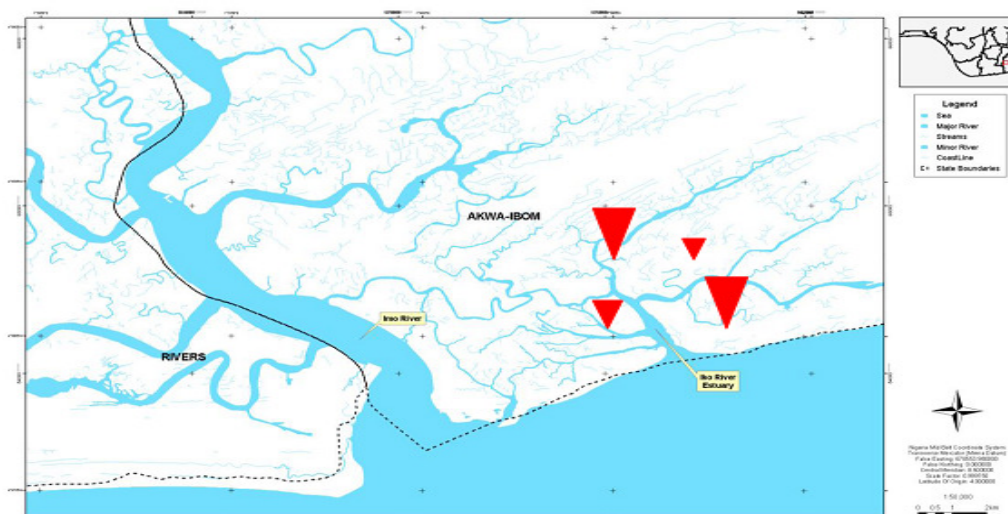
113 understand the link between atmospheric environmental conditions and occurrence of particular microbial species,
 114 for e.g the occurrence of *Micrococcus* has been shown to correlate with the concentration of air borne particulate
 115 matter this might explain why air borne *Micrococcus* species are commonly dominant in urban environments (16).
 116 Finally, culture based studies can help identify ubiquitous species that are likely to have large geographical range
 117 sizes, spore-forming organisms such as *Bacillus* species and other Gram-positive, tend to dominate culture-
 118 dependent surveys of air-borne microbial diversity and thus may have large geographical ranges (16).

119 Despite our knowledge and understanding of microbial diversities and interactions in our ecosystems as
 120 well as vast amounts of literatures available, much has not been done on the diverse microbial communities
 121 inhabiting the Iko River Estuarine atmosphere and their interactions with the biotic and abiotic components, thus
 122 called for this study.

123 **MATERIALS AND METHOD**

124 **2.1 Description of Study Area**

125 The Iko River Estuary (Figure 1) is a brackish ecosystem located in Eastern Obolo Local Government Area
 126 of Akwa Ibom State. Akwa Ibom State is located within the petroleum belt of the Niger Delta region of Nigeria. Iko
 127 River is located in the Eastern part of the Niger Delta. The river has a shadow depth ranging from 4.0 meters to 7.0
 128 meters at flood and ebb tides and an average width of 16 meters. Iko River takes its rise from the Qua Iboe River
 129 Catchment and drains directly into the Atlantic Ocean at the Bight of Bonny. The Bight of Bonny has many
 130 adjoining tributaries and creeks, and part estuary, which opens into the Atlantic Ocean. The shore line of Iko River
 131 is characterized by soft-dark mud flats, usually exposed during low tide, mangrove swamps with mangrove trees,
 132 shoals and sand beaches. The river has a semi-diurnal tide and has a length of more than 30km.
 133



134
 135
 136 Figure 1: Sampling sites on the Map of Iko River Estuary
 137
 138
 139

140 **2.2 Air Sampling and Quality Analysis**

141 The air sampling was conducted during high and low tide regimes of the estuarine ecosystem. Precisely
 142 four stations designated IES-1, IES -2, IES-3 and IES-4 respectively located at the coast of the Iko River Estuary.
 143 The coordinates of the sampling stations are presented in Table 1.
 144 The monitors were mounted at 1.5m above the ground level so that the pollutants were measured at about the sitting
 145 and breathing zone (17).
 146
 147

Table 1: Coordinates of air sampling stations

Station	Northing	Easting
IES-1	04°31'13.2"	007°45'16.4"
IES-2	04°30'43.4"	007°45'02.4"

IES-3	04°30'48.5"	007°45'54.2"
IES-4	04°30'43.9"	007°46'02.4"

148
149
150
151
152
153
154
155
156
157
158
159
160
161
162
163
164
165
166
167
168
169
170
171
172
173
174
175
176
177
178
179
180
181
182
183
184
185
186
187
188
189
190
191
192
193
194
195
196
197
198
199
200
201

2.2.1 Meteorological and Air Quality Measurements and Data Acquisition

In choosing sampling location, special preference was given to the accessibility of sampling station, availability of open space with good configuration free from shed and meteorological consideration of upward and downward directions, Areas with minimal local influence from vehicular movement was selected. For quality analysis, special attention was also given to sampling collection and analytical procedure with respect to the sensitivity and stability of equipment used, re-calibration of equipment and re-reproducibility of results. The existing meteorological and climatic data from MPN’s QIT meteorological station are used for the write-up. However, additional field data were collected for Atmospheric pressure, relative humidity, temperature, wind speed and wind direction. The measurements were taken at the different sampling (IES-1, IES -2, IES-3 and IES-4) stations. The measurements of the various meteorological parameters were carried out using *in situ* portable pieces of equipment as listed below.

2.2.2 Gaseous Emission Data Acquisition

Air quality studies were also carried out. The levels of gaseous emissions were determined at the 4 stations in the study area during low and high tides and its spatial boundaries in the upwind and downwind directions. The equipment used were highly sensitive digital meters held at arm’s length of the body. The parameters determined and equipment used were: Sulphur dioxide (SO₂) – (SO₂ gas monitor Gasman model 19648H); Nitrogen dioxide (NO₂) – (NO₂ gas monitor, Gasman); Hydrogen sulphide (H₂S) – (H₂S gas monitor, Gasman); Carbon monoxide (CO) – (CO gas monitor, Gasman); Chlorine – Cl₂ gas monitor, Gasman model 19812H; Hydrogen cyanide – (HCN gas monitor, Gasman model: 19772); Suspended Particulate Matter (Haz – Dust TM 10µg/m³ Particulate monitor); Volatile Organic Carbon (VOC) – A multi RAE Plus (PGM – 50); and Radiation – (Radiation alert (R) Monitor 4). All gaseous concentrations were recorded in parts per million (ppm). Air quality was examined at sampling stations in the onward and leeward directions at a distance of 1.5m above ground level. Highly sensitive digital portable meters were used for the measurements of NO₂, SO₂, H₂S, Cl₂, HCN, NH₃, SPM and CO.

2.3 Bio-aerosol Analysis of the Estuarine Environment

The microbiological air quality at the study stations was determined using settle plate culture technique, also known as sedimentation technique. This is based on deposition of viable particle on the surface of a solid medium per a given exposure time, as proposed by APHA (18). The numbers of aerobic count (mesophilic aerobic bacteria), total coliform, faecal coliform, *Staphylococcus aureus* and fungi (yeast and molds) in the atmosphere were determined using Nutrient agar (NA), MacConkey agar (MA), Eosine Methylene Blue agar (EMB), *Staphylococcus* medium (SM), *Pseudomonas* medium (PM) Starch Nitrate Agar and Sabouraud Dextrose Agar (SDA) as analytical media respectively (18). The media were fortified with 50µg/ml of streptomycin and 100µg/ml cycloheximide-50µg/ml benomyl respectively for the selective enumeration and isolation of fungi and bacteria.

The media were aseptically prepared in Postgraduate (PG) Laboratory of the Department of Microbiology, University of Uyo and contained in sterile Petri dishes before transportation to the study sites for air analysis.

For the settling technique, open 9cm diameter Petri dishes containing 20ml of appropriate culture media (NA, MCA, EMB, SM, SNA and SDA) were distributed at each sample station using 4 ft high wooden platforms and exposed for 15 minutes.

At the end of exposure, the Petri dishes were closed, transported to the laboratory and then incubated at 28°C for 2days for aerobic bacteria, coliforms, *Staphylococcus aureus* and *E.coli*, and at 28 ± 2 °C (room temperature) for 4 days for fungi. After incubation the colonies on culture plates were separately counted with the aid of a Quebec colony counter and the results recorded as cfu/15 minutes (19).

The numbers of microorganisms in the estuarine atmosphere expressed as CFU/m³ were estimated according to Polish standard PN89/2-04088/08 (20) as:

$$CFU/m^3 = a.1000/pt \times 0.2 \quad \text{Equation 1}$$

Where,

a= number of colonies on the Petri dish

p= surface measurement of the Petri dish used

t= time of Petri dish exposure

The colonies obtained from the samples were characterized using standard procedure as described by *Bergey’s Manual of Determinative Bacteriology* (21). The colonies were subjected to Gram’s stain and various

202 biochemical tests such as motility test, catalase test, urease test, coagulase test, citrate test, hydrogen sulphide test,
203 sugars utilization test and MR-VP test. Fungal isolates were identified according to the method Barnett and Hunter
204 (22).

205
206 **2.4 Determination of Spatial Variations in the Bio-aerosol Loads of the Estuarine Environment**
207 Geographic information system (GIS) was adopted to perform dynamic modeling of the bio-aerosols
208 distribution pattern. This involves establishing the spatial variations through a period of time. To achieve the goal,
209 the GIS-based pollution mapping which uses interpolation techniques such as distance weighting and kriging was
210 employed (23).

211
212 **2.5 Data Analysis**
213 The data collected were subjected to correlation matrix analysis to establish relationships between the
214 microbial groups. Simple percentage was also used to express the frequency of occurrence of microbial isolates
215 where necessary

216
217

218
219 **RESULTS**

220 **3.1 Microbial Diversity of Iko River Estuarine Atmosphere**
221 The estuarine atmosphere had 12 bacterial (Table 2) and 15 fungal (Table 3) isolates. Proportionately more
222 fungal isolates were found in the estuarine air. The occurrence and distribution of the isolates however varied with
223 the locations. *Nocardia* sp and *Pseudomonas aeruginosa* were the most occurring bacterial isolates (100%) while
224 *Aspergillus fumigates* was the most occurring fungal isolate with occurrence rate of 62.5%.

225

226 Table 2: Occurrence and distribution of the diverse species of bacteria in the estuarine atmosphere during low and high tides

Low tide	High tide								
Organisms	IES-1	IES-2	IES-3	IES-4	IES-1	IES-2	IES-3	IES-4	Occurrence rate (%)
<i>Micrococcus</i> sp	-	+	+	-	-	+	-	-	37.5
<i>Bacillus subtilis</i>	+	-	+	-	+	-	-	+	50.0
<i>Bacillus cereus</i>	-	-	-	-	+	-	-	-	12.5
<i>Streptococcus</i> sp	+	-	+	+	+	-	+	-	62.5
<i>Staphylococcus aureus</i>	+	+	-	+	+	-	+	+	75.0
<i>Citrobacter</i> sp	-	+	+	+	+	+	-	-	62.5
<i>Enterobacter</i> sp	+	-	+	-	-	-	-	+	37.5
<i>Staphylococcus albus</i>	-	+	+	-	+	+	-	+	62.5
<i>Nocardia</i> sp	+	+	+	+	+	+	+	+	100.0
<i>Pseudomonas aeruginosa</i>	+	+	+	+	+	+	+	+	100.0
<i>Serratia</i> sp	-	+	-	+	-	-	-	-	25.0
<i>Klebsiella</i> sp	-	-	-	-	+	-	+	-	25.0
Species Richness (12)	6	7	8	6	9	5	5	6	

227 Key: IES - Iko Estuary Station

228 Table 3: Occurrence and distribution of the diverse species of fungi in the estuarine atmosphere during low and high tides

Low tide	High tide								
Organisms	IES-1	IES-2	IES-3	IES-4	IES-1	IES-2	IES-3	IES-4	Occurrence rate (%)
<i>Aspergillus flavus</i>	-	+	-	+	-	-	+	+	50.0
<i>Aspergillus niger</i>	+	+	-	-	+	-	-	-	37.5
<i>Aspergillus fumigates</i>	+	-	-	+	+	+	-	+	62.5
<i>Aspergillus terreus</i>	-	-	+	+	-	-	+	-	37.5
<i>Rhizopus stolonifer</i>	-	+	+	-	+	-	-	+	50.0
<i>Penicillium expansum</i>	-	-	+	-	+	-	+	-	37.5
<i>Candida albicans</i>	-	-	-	-	-	-	+	-	12.5
<i>Candida tropicalis</i>	-	+	+	-	-	-	-	-	25.0
<i>Eurotium</i> sp	+	+	-	-	-	-	-	-	2.5.0
<i>Absidia</i> sp	-	-	-	-	-	+	-	+	25.0
<i>Mucor</i> sp	+	-	+	-	+	+	-	-	50.0
<i>Cladosporium</i> sp	+	-	-	-	-	-	-	-	12.5
<i>Verticillium</i> sp	-	+	-	-	-	-	-	-	12.5
<i>Fusarium</i> sp	-	-	-	+	-	-	+	-	25.0
<i>Trichoderma</i> sp	-	+	-	-	-	+	-	-	25.0
Species Richness	5	7	5	4	5	4	5	4	

229 Key: IES - Iko Estuary Station

230

231 **3.2 Air quality, Meteorology and Noise Levels in Iko Estuarine Environment during Low and High Tides**

232 The results of the air quality attributes of Iko Estuary during low tide (Table 4) and high tide (Table 5)
 233 showed that the quality of air in the estuarine environment was affected. The mean values of the air attributes during
 234 low tide and high tides were respectively 0.15±0.05 and 0.10±0.00 ppm for NO₂, 0.28±0.08 and 0.15±0.05 ppm for
 235 SO₂, 0.38±0.04 and 0.38±0.08 ppm for H₂S, 13.0±3.24 and 11.75±2.17 ppm for CO, 2.13±0.74 and 3.75±1.30 ppm
 236 for NH₃, 0.28±0.04 and 0.25±0.11 ppm for Cl₂, 0.15±0.05 and 0.1±0.00 ppm for SPM and 0.75±1.09 and -1.05±0.09
 237 ppm for HCN. The values obtained varied between low and high tides. VOC was not detected in the atmosphere of
 238 most station except at station IES-3 during the high tide. H₂S, CO and NH₂ values were remarkable showing that the
 239 estuarine air was unwholesome. The results also showed that the values NH₃ were remarkably high. However, the
 240 levels of NO₂, SO₂ and HCN were within the permissible limits.

241 The results also showed that mean temperature, relative humidity (RH), pressure and wind speed were
 242 24.13±0.65 °C, 74.50±2.03%, 738.75±0.25 mmHg and 0.48±0.04 m/s and 24.63±0.41°C, 69.03±1.87%,
 243 738.75±0.56mmHg, and 0.68±0.20 m/s respectively during the low and high tides. Slightly higher values of noise
 244 were recorded in the estuarine environ during high tide. The noise level measured in decibel (dB) revealed a mean
 245 minimum value of 51.28±8.15 dB and 57.35±3.28 dB during low and high tides respectively and maximum of
 246 88.23±3.03 dB and 88.98±3.35 dB during low and high tides respectively.

247

248 Table 4: Air quality, meteorology and noise levels in iko estuarine environment during low tide

Parameter	IES-1	IES-2	IES-3	IES-4	Mean	SD	WHO limit
NO ₂ (ppm)	0.1	0.2	0.1	0.2	0.15	0.05	200µg/m ³ /hr
SO ₂ (ppm)	0.2	0.4	0.2	0.3	0.28	0.08	350µg/m ³
H ₂ S (ppm)	0.3	0.4	0.4	0.4	0.38	0.04	
CO (ppm)	9.0	13	18.0	12.0	13.0	3.24	10 µg/m ³
VOC (ppm)	-	-	-	-	-	-	
NH ₃ (ppm)	1.0	2.5	2.0	3.0	2.13	0.74	
Cl ₂ (ppm)	0.2	0.3	0.3	0.3	0.28	0.04	
SPM (ppm)	0.1	0.2	0.2	0.1	0.15	0.05	50 µg/m ³
HCN (ppm)	-1.0	2.0	1.0	1.0	0.75	1.09	
Temperature (°C)	23.5	25.0	23.5	24.5	24.13	0.65	
RH (%)	76	77.0	72.5	72.5	74.50	2.03	
Pressure (mmHg)	738.5	739	739	738.5	738.75	0.25	
Wind Speed (m/s)	0.5	0.4	0.5	0.5	0.48	0.04	
Noise (dB (A)) Min.	53.1	37.7	55.0	59.3	51.28	8.15	
Max.	84.9	85.5	91.4	91.1	88.23	3.03	

249

250 Table 5: Air quality, meteorology and noise levels in iko estuarine environment during high tide

Parameter	IES-1	IES-2	IES-3	IES-4	Mean	SD	WHO limit
NO ₂ (ppm)	0.1	0.1	0.1	0.1	0.10	0.00	200µg/m ³ /hr
SO ₂ (ppm)	0.1	0.2	0.1	0.2	0.15	0.05	350µg/m ³
H ₂ S (ppm)	0.4	0.3	0.5	0.3	0.38	0.08	
CO (ppm)	12.0	9.0	11.0	15.0	11.75	2.17	10 µg/m ³
VOC (ppm)	-	-	0.04	-	-	-	
NH ₃ (ppm)	5.0	2.0	5.0	3.0	3.75	1.30	
Cl ₂ (ppm)	0.4	0.1	0.2	0.3	0.25	0.11	
SPM (ppm)	0.1	0.1	0.1	0.1	0.1	0.00	50 µg/m ³
HCN (ppm)	-1.0	-1.2	-1.0	-1.0	-1.05	0.09	
Temperature (°C)	24.5	25.0	25.0	24.0	24.63	0.41	
RH (%)	67.5	67.0	70.0	71.6	69.03	1.87	
Pressure (mmHg)	739.50	738.51	739	738	738.75	0.56	
Wind Speed (m/s)	0.5	1.0	0.7	0.5	0.68	0.20	
Noise (dB(A))	56.5	55.5	62.9	54.5	57.35	3.28	
Min.							
Max.	89.6	94.1	87.0	85.2	88.98	3.35	

251

252 **3.3 Spatial Variations in the Microbial Loads of the Estuarine Atmosphere**

253 GIS model of spatial distribution of heterotrophic bacteria in the estuarine atmosphere during the low and
 254 high tides is presented in Figure 2. The results show high (blue band) heterotrophic bacterial concentrations in the
 255 North-West of the estuarine environment, while the yellowish brown band signifies lower bacterial concentrations.
 256 During high tide, the orange brown band shows high heterotrophic bacterial concentrations in the North-East of the
 257 estuarine environment, while the pink band signifies lower bacterial concentrations in the North East of the estuarine
 258 environment. Analysis also showed high concentrations (blue band of fecal coliform in the North East zones of the
 259 atmosphere during the low and high tides (Figure 3), while fungal loads (whitish brown band) were evenly
 260 distributed in the estuarine atmosphere during low tide but higher (bluish pink band) in the North West zone during
 261 the high tide (Figure 4).
 262
 263

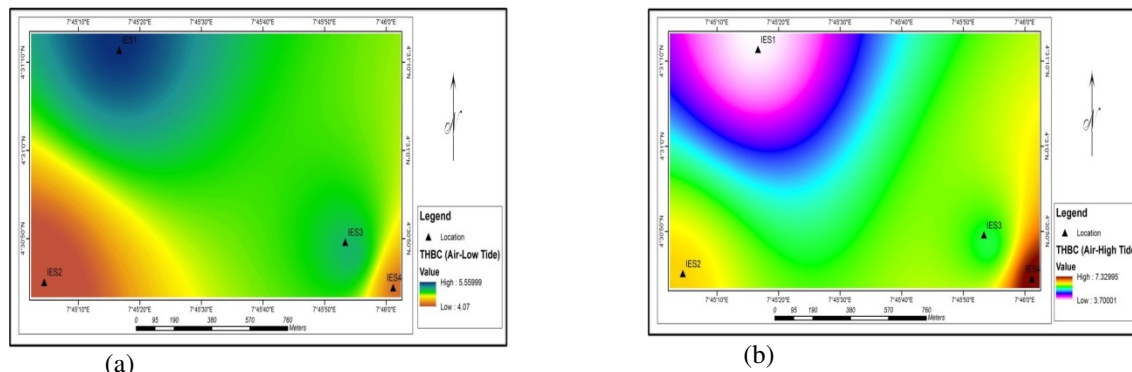


Figure 2: Spatial distribution of heterotrophic bacteria in air during (a) low tide and (b) high tide

264
 265
 266
 267
 268

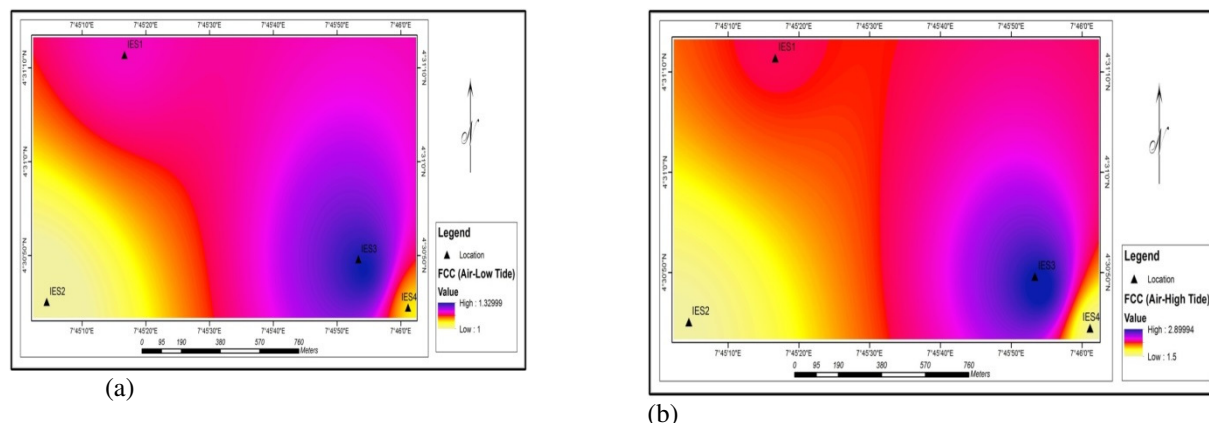


Figure 3: Spatial distribution of faecal coliform bacteria in air during (a) low tide and (b) high tide

269
 270
 271
 272

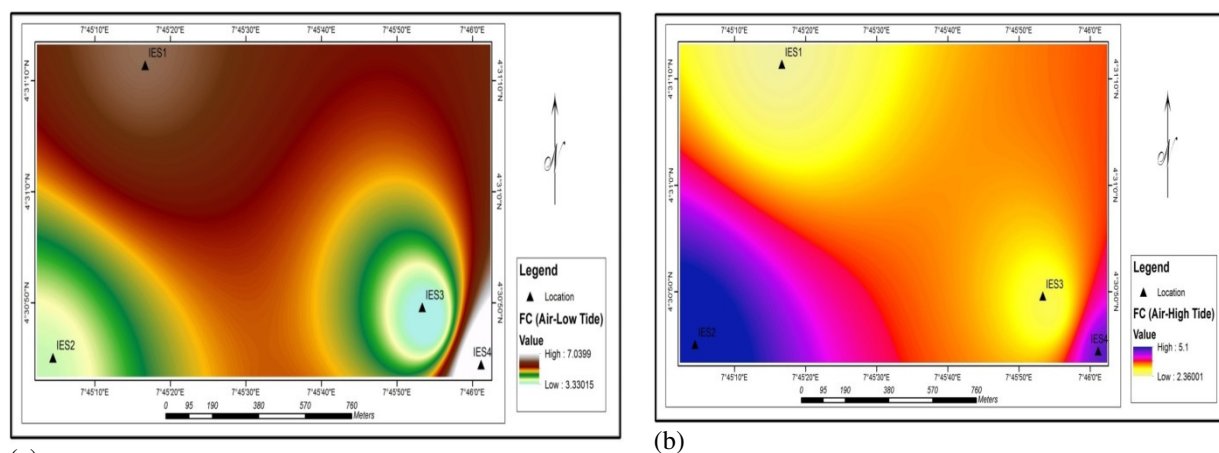


Figure 4: Spatial distribution of fungi in air during (a) low tide and (b) high tide

273

274

4.0 Discussion

275

276

277

278

279

Diverse population of microorganisms inhabits the natural environments. These include a wide range of physiological and nutritional types (24). Findings from this study on the abundance and distribution of microbial communities in the Iko River estuarine atmosphere during low and high tides have revealed variation in microbial population dynamics between tidal influences. The results have revealed the rich microbial assemblage and diversity in the estuarine environment.

280

281

282

283

284

285

286

287

288

289

290

291

292

293

Microorganisms are ubiquitous in the atmosphere with concentrations of bacterial cells typically exceeding 100 million m^3 of air over land. Numerous studies have suggested that the presence of microbes in the atmosphere may impact cloud development, atmospheric chemistry and microbial geography (8, 13). A sound knowledge of bacterial concentrations and distributions in the atmosphere is needed to evaluate these claims. With the advent of microbial generation sequencing techniques, scientists have uncovered the details of biodiversity and biogeography of a largely unknown ecosystem, the air. The discoveries prove that airborne microbes do much more than just ride the wind transmitting disease (25) The results of this study have revealed fairly high microbial loads in the estuarine atmosphere. The results have shown that bacteria and fungi were detected in all the stations investigated. For both the low tide and high tide samples analyzed, the values of mesophilic aerobic bacteria obtained by the sedimentation technique were more than APHA's (18) **standard (30 cfu/15 mins)** for settling technique although the estimated values per volume of air were below values reported elsewhere. Sullivan (26) reported mean bacterial and fungal loads of 4344 cfu/ m^3 and 4121 cfu/ m^3 respectively for the atmosphere of an outdoor environment in Upper Silesia. This was attributed to contamination from the soil surface, since higher concentrations of bacteria were present when dust was raised (27).

294

295

296

297

298

299

300

301

302

303

In this study more microbes were encountered in air during high tide than low tide and this may attribute to the upwelling effect of tidal currents and the associated waves. Bioaerosols are airborne particles, solid or liquid. They can be large molecules or volatile compounds. They contain living organisms. They will vary in size from a fraction of a micron to around 100 microns. As with inert "dust" particles all bioaerosols are governed by the laws of gravity, and will be affected by air movements being transported by turbulence and diffusion. This could forcefully discharge microbial cells especially fungal spores from entrapped conditions. In addition to APHA (18), there are other recommendations for microbiological counts in the air of tourist and food processing areas. Kang and Frank (1989) recommended 180-360 cfu/ m^3 for mesophilic aerobic bacteria and 70-430 cfu/ m^3 for yeasts and molds. **Higher values were** recorded in the present study. This was expected because the area proximity to enormous vegetation and apparently poor sanitary condition of the nearby riparian forest.

304

305

306

307

308

309

310

311

The mean numbers of mesophilic aerobic bacteria and fungi as well as that of the indicator bacteria in the atmosphere of the estuarine environment shows that the fungi were more abundant. This may be attributed to the aerodynamic behavior of the fungal aerosols, affecting the deposition of yeasts and molds on solid media surface exposed to air. The aerodynamic behavior of these aerosols is different for each microbial group and is influenced by their physical and biological characteristics, diameter of the particle, humidity, temperature, ventilation and human activities in the study area as well as the gravitational and electrostatics forces (28). For example, particles with diameter equal or higher than 10mm are able to move vertically between 30 and 60 cm per minute while particles of lower diameter take longer to move the same distance if there are no interferences from other factors,

312 such as ventilation and personnel activity at site (26). Similarly, the spore dimensions influence the deposition on
313 surfaces. Continuous dumping of wastes at the studied site would certainly affect the initial sources of the bio-
314 contaminant (plants and soil) and distort their distribution dynamics leading to higher number of bio-aerosols in the
315 air.

316 Air will often contain micro-organisms such as viruses, bacteria, and fungi. None of these actually live in
317 the air, the atmosphere tends to kill off most of them. However, they are frequently transported attached to other
318 particles, such as skin flakes, soil, dust, or dried residues from water droplets. Aggregation of cells into clumps can
319 enhance the survival whilst airborne. Bacterial cells when they become airborne normally rapidly die – within a few
320 seconds, due to evaporation of water associated with the particle. Thus with higher humidity higher bioaerosol levels
321 can prevail. Airborne fungal cells (yeasts, moulds, spores) can remain viable for much longer periods, even at low
322 relative humidity and high or low temperature extremes.

323 Epidemiological studies have shown that high concentration of microorganisms in the air can be allergenic;
324 however sometimes even very low concentrations of some particular microorganisms can cause serious diseases
325 (28). Among the microorganisms isolated from the estuarine atmosphere, *Staphylococcus aureus*, *Streptococcus* sp,
326 *Bacillus* sp, *Escherichia coli* and *Pseudomonas aeruginosa* are known to be pathogenic. *Staphylococcus aureus* is
327 normally part of the skin flora. About 20% of the human populations are long-term carriers of *Staphylococcus*
328 *aureus*. *Staphylococcus aureus* are known to form aggregates in nature, so they tend to give higher colony counts
329 and also because of the possible breaking up of the clusters (29). The bacterium has also been reported on the body
330 of many mammals. *Staphylococcus aureus* is associated with a wide range of illness ranging from minor skin
331 infections such as pimples, impetigo, boils (furuncles), cellulitis, folliculitis, carbuncles, scaled skin syndrome and
332 abscesses to life threatening diseases such as pneumonia, meningitis, osteomyelitis, endocarditis, toxic shock
333 syndrome (TSS), chest pain and sepsis (30). On the other hand, *Streptococcus pyogenes* is associated with sore
334 throat. *Streptococcus pneumoniae* is associated with Pneumococcal pneumonia pink eye, meningitis, endocarditis
335 and other respiratory tract diseases (30). *Bacillus* endospores have a usual resistance to chemical and physical agents
336 and this makes them predominant in the soil habitat and explains their aerial distribution. Species of *Enterococcus*,
337 e.g. *E. faecalis* can cause endocarditis as well as bladder, prostate and epidermal infections (30). *Escherichia coli* is
338 a Gram negative, facultatively anaerobic, rod-shaped bacterium that is an indicator of recent faecal contamination.
339 Most *E. coli* strains are harmless but some serotypes can cause serious food poisoning in humans and are
340 occasionally responsible for product recalls due to food contamination (31). The presence of this organism in the
341 atmosphere indicates high level of faecal contamination in the environment. However, they are released into the
342 atmosphere when the faecal matter is disturbed (31).

343 Aspergillosis is the name given to a wide variety of diseases caused by infection by fungi of the genus
344 *Aspergillus*. The majority of cases occur in people with underlying illnesses such as tuberculosis or chronic
345 obstructive pulmonary disease (COPD), but with otherwise healthy immune systems. Most commonly, aspergillosis
346 occurs in the form of chronic pulmonary aspergillosis (CPA), aspergilloma or allergic bronchopulmonary
347 aspergillosis (32). People with deficient immune systems – as patients undergoing hematopoietic stem cell
348 transplantation, chemotherapy for leukaemia, or AIDS – are at risk of more disseminated disease. Acute invasive
349 aspergillosis occurs when the immune system fails to prevent *Aspergillus* spores from entering the bloodstream via
350 the lungs. Without the body mounting an effective immune response, fungal cells are free to disseminate throughout
351 the body and can infect major organs such as the heart and kidneys.

352 The most frequently encountered fungus was *Aspergillus fumigatus* - a ubiquitous organism that is capable
353 of living under extensive environmental stress. It is estimated that most humans inhale thousands of *Aspergillus*
354 spores daily, but they do not affect most people's health due to effective immune responses (28).

355 The results of the research have further confirmed that indigenous microflora of an environment developed in
356 spatially organized physicochemical gradients (24). It is the existence of physicochemical gradient that permits the
357 development and coexistence of a heterogenous population of microorganisms. The microbial population is
358 organized either horizontally or vertically depending on the direction of the gradient. Analysis of the spatial
359 distribution of the populations of some microbial communities using the GIS model has revealed marked variation
360 in the distribution of microbial communities between tidal influences. This is in agreement with previous report that
361 microbial population changes can result from periodic or non periodic events affecting either the physicochemistry
362 of the environment as a whole, or the gradients within a given environment (24). The same authors reported that
363 physicochemical effects may be both; (i) direct through the immediate effects on a given part of the population as
364 exemplified by the high densities of hydrocarbon utilizing bacteria recorded for sediment as index of the
365 hydrocarbons loads of the sediment and (ii) indirect through the effect on interactions between members of the
366 community.

367 Variation in distribution of microbial communities noticed may be of serious implications to the existence
368 of microbes in air, it has significant health implications as the information may be used to predict exposures to
369 harmful air contaminants. The spatial distribution of the bio-aerosols revealed that bacteria and fungi were found in
370 high concentrations in the north-west zone of the estuarine environment during both tides, while fungi were highly
371 concentrated in the north-east during high tide. Varnam and Evans (24) reported that variation in distribution in bio-
372 aerosol concentrations are caused by variation in temperature, moisture availability and hours of daylight. They
373 further affirmed that cultivable bacteria are more prevalent in dry season than wet season and in some regions may
374 be influenced by the dry, dusty conditions and associated agricultural or human activities apparent in dry season in
375 contrast to wet conditions with snow cover during the wet season. Typically, a higher environmental temperature,
376 wind speed and relative humidity favour microbial growth (33). This study was carried out during the wet season
377 and accordingly, it is suggested that the wind speed-influenced variation in tidal currents was majorly the factor that
378 causes the spatial distribution difference in the microbial concentrations in the estuarine atmosphere. This finding
379 shows that, although microorganisms are ubiquitous in the environment, their identities and concentrations are not
380 consistent as they fluctuate according to geographical location, climate events, seasons, and human activities (34).

381 The study area was predominated by Gram positive and Gram negative rods. The atmosphere harboured
382 more diverse species of fungi. The results revealed diverse microbial species. Some of the species encountered in
383 this ecosystem have previously been reported by Udotong et al., (35).

384 The research results have that among the bacterial isolates, *Nocardia* sp and *Pseudomonas aeruginosa* were
385 the most predominant in air with 100% prevalence rate. Among the fungi isolated from the estuarine environment,
386 *Penicillium expansum*, *Aspergillus terreus* and *Aspergillus fumigatus* were the most predominant. These organisms
387 are broadly present in nature, including soil, cereal grains, hay and other plant material or foodstuff (36).

388 The air quality in the estuarine environment was relatively "clean" and wholesome as most criteria gaseous
389 pollutants (HCN, NO₂, SO₂) except CO and SPM were below detectable limits and within the FMENV and WHO
390 acceptable limits. However, the recorded levels of CO in some parts of the fishing settlement were above Federal
391 Ministry of Environment (FMEnv) limits of 10.0 - 20.0ppm for daily average of 8 hourly values in Nigeria. The
392 levels of atmospheric contaminants varied between low and high tides. The 2.0 ppm level of SPM recorded during
393 high tide is higher than the FMEnv limits of 0.25ppm and is dangerous. It is apparent that there was significant
394 emission of CO from the fish smoking activity which is common in the settlements. Similarly, the study has shown
395 that there is potential risk of contamination with H₂S, NH₃ and HCN although the values were within the FMEnv
396 recommended limits. The concentrations of gaseous pollutants recorded within the estuarine represent background
397 levels or baseline conditions of the area. The low concentrations of gaseous pollutants obtained in the study area
398 during this study may be due to the absence of industrial activities in the area that would generate such materials as
399 well as influence of rains which dilute and dissolve pollutants in the atmosphere.

400 Maximum Noise level in the Iko river estuary environment was also beyond the permissible limits of 90dB
401 (A) for 8 hourly period at some stations during both tides. The results from this study revealed a range of 37.7 dB -
402 94.1 dB during both tides. This shows that in some stations the noise values recorded were higher than the threshold
403 limits of 90dB (A) recommended by FMEnv for 8 hourly exposure period and 85dB recommended by WHO,
404 although these values at some stations are below the 44.0dB recommended for Agricultural cropland. According to
405 the EPA protective noise level, it shows that Iko estuary environment was noisy and this can be attributed to human
406 activities in the estuary and activities of the gas plant from the nearby oil and gas industries. However, there was no
407 potential source for noise increases, since the settlement is situated in a large riparian forest.

408 Many atmospheric factors influence the way air pollution is dispersed, including wind direction and wind
409 speed, type of terrain and heating effects. To better understand how atmosphere processes can affect ground level
410 pollution, atmospheric conditions can be described simply as either stable or unstable, where the stability is
411 determined by wind (which stirs the air) and heating effects (which cause convection currents). Atmospheric
412 stability affects pollution released from ground level and elevated sources differently. The present study has
413 revealed variation in the atmosphere quality of the estuarine environment during low and high tides creating an
414 unstable atmospheric condition. In unstable conditions, ground level pollution is readily dispersed thereby reducing
415 ground level concentrations. Elevated emissions, however, such as those released from a chimney, are returned more
416 readily to ground level, leading to higher ground level concentrations. However in stable Conditions there is less
417 atmospheric mixing and therefore higher concentrations around ground level sources, but better dispersal rates, and
418 therefore lower ground level concentrations, for elevated plumes. Bioaerosols coexist with gaseous substances in the
419 air, in particular volatile organic compounds whether perceived as odorous or not. Synergistic effects could thus
420 result from the presence of bioaerosols or particles (dust or water droplets) in odorous air. Ossowska-Cypryk (37)
421 reported on the current state of knowledge on the subject and indicated that dusts may concentrate certain odorous
422 compounds, for example volatile organic acids or ammonia, which help to exacerbate respiratory irritation caused by

423 the dusts. However, there is very little known about additive or synergistic effects of odorous volatile organic
 424 compounds that are irritants and/or toxic and the various bioaerosols (37).

425 Poor air quality can also affect vegetation. Sulphur dioxide, one of the main components of acid rain, has
 426 direct effects on vegetation. Changes in the physical appearance of vegetation are an indication that the ability of
 427 many plants to photosynthesise (generate food from sunlight, water and carbon dioxide) is impaired by the
 428 concentration of sulphur dioxide. Harm caused by sulphur dioxide is first noticeable on the leaves of the plants. For
 429 some plants injury can occur within hours or days of being exposed to high levels of sulphur dioxide. Leaves in mid-
 430 growth are the most vulnerable, while the older and younger leaves are more resistant. Damage to coniferous
 431 needles can be seen in the extreme colour difference between the green base and the bright orange-red tips. It may
 432 also increase the severity of many fungal diseases.

433 There was a significant positive correlation ($r = 0.717$, $p < 0.05$) between the total heterotrophic bacteria in
 434 the atmosphere and wind speed, and between the fungi in the atmosphere and wind speed ($r = 0.799$) during high
 435 tide, indicating that increase in wind speed resulted in a corresponding effect in heterotrophic bacterial and fungal
 436 counts during high tide. A comparison of the relation between atmospheric temperature and microbial load showed
 437 little or no correlation ($r = 0.30$).

438

439 5.0 CONCLUSION

440 The Iko River estuarine environment harbours distinct microbial populations of ecological and
 441 biogeochemical importance with the physicochemical attributes that show tidal variations and could affect aquatic
 442 biota along the food chain. The use of modern molecular tools would reveal the communities' relationship and
 443 biogeography of the estuarine environment. However, the present results have shown that the Iko River estuarine
 444 environment is polluted by indiscriminate disposal of industrial effluent, oil spillage, gas flaring, disposal of
 445 domestic waste and fecal matter by inhabitants of the area. This study has revealed that the estuarine air is heavily
 446 contaminated with microorganisms. The level and quality of contamination however varied with the sample
 447 locations and tidal influences. GIS modeling of the spatial distribution of microbial contaminants in the atmosphere
 448 has revealed that both bacteria and fungi exist in high concentrations in the north-west of the study area, while
 449 fungal contaminants occurred in high concentrations in the north-east section of the estuarine environment. The
 450 accumulation of fungal spores in the air can affect the health status of the estuarine environment inhabitants. The
 451 findings revealed that tidal bars and flats in shallow mesotidal estuary are subject to the action of tidal current and
 452 waves. These complex events give rise to large variations in microbial communities in estuarine atmosphere which
 453 may be harnessed for effective environmental monitoring.

454

455 References

- 456 1. Lomolino, M., Riddle, B. and Brown, J. (2006). *Biogeography*, 3rd ed. Sunderland, Massachusetts:
 457 Sinauer Association, pp. 98-105.
- 458 2. Green, J. L. and Bohannan, B. J. M. (2006). Spatial Scaling of Microbial Biodiversity in Scaling
 459 Biodiversity (Storch, D. and Marquet, P. A. and Brown, J. H. Cambridge: Cambridge University
 460 Press, p. 155.
- 461 3. Fierer, N. and Jackson, R. (2006). The Diversity and Biogeography of Soil Bacterial Communities.
 462 *Proceedings of the National Academy of Science, USA*, 103; 626-631.
- 463 4. Finlay, B. J. (2002). Global Dispersal of Free-living Microbial Eukaryote Species. *Science*, 296;
 464 1061-1063.
- 465 5. Fenchel, T. (2003). Microbiology: Biogeography for Bacteria. *Science*, 301(5635): 925 - 926.
- 466 6. Martiny, J. B. H., Bohannan, B. J. M., Brown, J. H., Colwell, R. K., Fuhrman, J. A., Green, J. L.,
 467 Horner-Devine, M. C., Kane, M., Krumins, J. A., Kuske, C. R., Morin, P. J., Naeem, S., Øvreås, L.,
 468 Reysenbach, A., Smith, V. H. and Staley, J. T. (2006). Microbial Biogeography: Putting
 469 Microorganisms on the Map. *Nature Reviews Microbiology* 4:102-112.
- 470 7. Kuske, C. R., Ticknor, L. O., Miller, M. E., Dunbar, J. M., Davis, J. M., Barns, S. M. and Belnap, J.
 471 (2006). Comparison of Soil Bacterial Communities in Rhizosphere of three Plant Species and the
 472 Interspaces in an Arid Grassland. *Applied and Environmental Microbiology*, 68; 1854-1863.

- 473 8. Burrows, S. M., Elbert, W., Lawrence, M. G. and Poschl, U. (2009). Bacteria in the Global
474 Atmosphere: Part I – Review and Synthesis of Literature Data for different Ecosystems.
475 *Atmospheric Chemistry and Physics*, 9; 9263-9280.
- 476 9. Womack, A. M., Bohannan, B. J and Green, J. L. (2010). Biodiversity and Biogeography of the
477 Atmosphere. *Philosophical Transactions of the Royal Society B*, 365: 3645-3653.
- 478 10. Jones, B., Grant, W., Duckworth, A. and Owenson, G. (1998). Microbial Diversity of Soda Lake.
479 *Extremophiles*, 2; 191-200.
- 480 11. Rothschild, L and Mancinelli, R. (2001). Life in Extreme Environment. *Nature*, 409; 1092-1101.
- 481 12. Pearce, D. A., Bridge, P. D., Hughes, K. A., Sattler, B., Psenner, R. and Russell, N. J. (2009).
482 Microorganisms in the Atmosphere over Antarctica. *FEMS Microbiology Ecology*, 69:143:157.
- 483 13. Brodie, E. L., DeSantis, T. Z., Parker, J. P., Zubietta, I. X., Piceno, Y. M. and Anderson, G. L. (2007).
484 Urban Aerosols Harbor Diverse and Dynamic Bacterial Populations. *Proceedures for Natural*
485 *Academic Science*, 104; 299-304.
- 486 14. Hill, M., Hill, A., Lopez, N. and Harriott, O. (2006). Sponge-specific Bacterial SYMBIONTS in the
487 Caribbean sponge, *Chondrilla nucula* (Demospongiae, Chondrosida). *Marine Biology*, 148; 1221-
488 1230.
- 489 15. Amato, P., Parazols, M., Sancelme, M., Laj, P., Mailhot, G. and Delort, A. M. (2007). Micro-
490 organisms Isolated from the Water phase of Tropospheric Clouds at the Puy de d'ome: major
491 groups and growth abilities at low temperatures, *FEMS Microbiology Ecology*, 59(2): 242-254.
- 492 16. Fang, Z., Ouyang, Z., Zheng, H., Wang, X. and Hu, L. (2007). Culturable Airborne Bacteria in
493 Outdoor Environments in Beijing, China. *Microbial Ecology*, 54; 487- 496.
- 494 17. Bogo, H., Negri, R. M. and San Roman, E. (1999). Continuous Measurement of Gaseous
495 Pollutants in Buenos Aires city. *Atmospheric Environment*, 33; 2587-2598.
- 496 18. APHA (1998). *Standard Methods for Examination of Water and Wastewater*. 18th ed. Hanover,
497 Maryland: EPS Group, Inc.
- 498 19. Pasquarella, C., Pitzurra, O. and Savino, A. (2000). The Index of Microbial Air Contamination.
499 *Journal of Hospital Infection*, 46:241-256.
- 500 20. Friberg, L. and Vahter, M. (1999). Assessment of Exposure to Lead and Cadmium through
501 Biological Monitoring. Results of a UNEP/WHO Global Study. *Environmental Research*, 30; 95-
502 128.
- 503 21. Bergey, D. H and Holts, J. G. (1994). *Bergey's Manual of Determinative Bacteriology*, 9th ed.
504 Philadelphia: Lipincott Williams and Wilkins Publication.
- 505 22. Barnett, H. L. and Hunter, B. B. (1987). *Illustrated Genera of Imperfect Fungi*. New York:
506 Macmillan Publishing Company, pp. 70-80.
- 507 23. Kunzli, N., Jerrett, M., Mack, W. J., Beckerman, B., LaBree, L. and Gilliland, F. (2005). Ambient Air
508 Pollution and Atherosclerosis in Los Angeles. *Environmental Health Perspectives*, 113; 201-206.
- 509 24. Varnam, A. H. and Evans, M. G. (2000). *Environmental Microbiology*. ASM Press, U.S.A. p 7-155.
- 510 25. Farrell, J. B. (1993). Fecal Pathogens Control during Composting, In: *Science and Engineering of*
511 *Composting: Design, Environmental, Microbiological and Utilization Aspects* edit. H. A. J. Hoitink
512 and H. M. Keener, pp. 282-300.
- 513 26. Sullivan, J. J. (1979). Air Microbiology and Dairy Processing. *Australian Journal of Dairy*
514 *Technology*, 34; 133-138.
- 515 27. Jones, A. M. and Harrison, R. M. (2004). The Effect of Meteorological Factors on Atmospheric
516 Bioaerosols Concentration- A Review. *Science of the Total Environment*, 326; 151-180.
- 517 28. Kang, Y. J. and Frank, F. J. (1989). Biological Aerosols: A Review of Airborne ontamination and its
518 Measurement in Dairy Processing Plants. *Journal of Food Protection*, 2; 512-524.
- 519 29. Lansing, A. E., Ivnik, R. J., Cullum, C. M. and Randolph, C. (1999). An Empirically derived Short
520 Form of the Boston Naming Test. *Achieves of Clinical Neuropsychology*, 14; 481-487.

- 521 30. Prescott, L. M., Harley, J. P and Klein, D. A. (2005). *Microbiology*. 6th Edition. McGraw-Hill Co.
522 New York, London.
- 523 31. Vogt, R. L. and Dippoid, L. (2005). *Escherichia coil* 0517:H7 Outbreak Associated with
524 Consumption of Ground Beef, June-July 2002. *Public Health Reports*, 120(2):178-182.
- 525 32. Denning, D. W., Pleuvry, A. and Cole, D. C. (2013). Global Burden of Allergic Bronchopulmonary
526 Aspergillosis with Asthma and its Complication Chronic Pulmonary Aspergillosis in Adults.
527 *Medical Mycology*, 51(4): 361-70.
- 528 33. Ren, D., Navarro, B., Perez, G. (2001). A Sperm Ion Channel required for Sperm Motility and
529 Male Fertility. *Nature*, 413:603-609.
- 530 34. Shaughnessy, J. M. and Watson, J. Moritz, J. and Reading, C. (1999). School Mathematics
531 Students' Acknowledgement of Statistical Variation. NCTM Research Pre-session Symposium:
532 There's More to Life than Centers. Paper presented at the 77th Annual NCTM Conference, San
533 Francisco, California.
- 534 35. Udotong, I. R., Edouk, S. I., Essien, J. P. and Ita, B. M. (2008). Density of Hydrocarbonoclastic
535 Bacteria and Polycyclic Aromatic Hydrocarbon Accumulation in Iko River Mangrove Ecosystem,
536 Nigeria. *Environmental microbiology. Science of the Total Environmental*, 11; 23-30
- 537 36. Burge, H. A., Pierson, D. L., Groves, T. O., Strawn, K. F. and Mishra, S. K. (2000). Dynamics of
538 Airborne Fungal Population in a Large Office Building. *Current Microbiology*, 40(1): 10-16.
- 539 37. Ossowska-Cypryk, K. (1999). The Role of Selected Groups of Microbes in the Evaluation of the
540 Impact of Communal Settings on the Environment –A Review. *Science of the Total Environment*,
541 326:151-180.
- 542