

Original Research Article

Phenotypic diversity in fluted pumpkin (*Telfairia occidentalis* Hook. F)

ABSTRACT

Fluted pumpkin (*Telfairia occidentalis*) is an important indigenous leaf and seed vegetable of West Africa. It is among the neglected and underutilized crops with high nutritional, medicinal and industrial potentials. Twenty five genotypes of fluted pumpkin collected from eleven states in Nigeria were planted in the 2012 and 2013 rainy seasons at Abeokuta and Akure to determine the genetic diversity in phenotypic traits among the genotypes. Randomized Complete Block Design (RCBD) was used and data were collected on growth and yield characters. Principal Component Analysis (PCA) and Single Linkage Cluster Analysis (SLCA) were employed to analyse the magnitude and pattern of diversity among the genotypes. Efficiency of the techniques in classifying these genotypes was also examined. The first eight PCA axes captured 90.77% of the total variance. The PCA identified marketable leaf yield, vine length, leaf fresh weight, vine fresh weight, leaf area, number of leaves, fruit weight, fruit length, number of seeds and seed weight as most important characters in discriminating the 25 fluted pumpkin genotypes. The genotypes were grouped into six clusters based on their level of similarity by the SLCA. These clusters displayed a wide range of diversity for most of the traits. SLCA proved to be an effective method in grouping the genotypes for efficient breeding programmes. The diverse genotypes identified in the different clusters can be used as parents to achieve heterosis for higher seed and leaf yield.

Keywords: *Telfairia occidentalis*; SLCA; PCA; genetic diversity

INTRODUCTION

The genus *Telfairia* (family *Cucurbitaceae*) has two main species: *Telfairia occidentalis* Hook. F. endemic to West and Central Africa and *Telfairia pedata* (Smith ex Sims) Hook –the oyster nut which is native to mainland Tanzania and northern Mozambique and the isles of Zanzibar and Pemba [1]. The two main species of *Telfairia* are dioecious and perennial. This genus is

characterised by large droopy pepo fruit weighing up to 15kg and it has one of the largest seeds among the cucurbits [2, 1]. Out of the two species of the genus fluted pumpkin (*Telfairia occidentalis*) is the most important economically and relatively the most cultivated. Fluted pumpkin is a multipurpose vegetable, cultivated for its seed, leaves and tender shoot. The crop gained importance as a promising vegetable crop owing to its perennial nature that ensures all year round availability, ability to alleviate poverty, nutritional and medicinal values of its leaves and seeds and its industrial potential as vegetable oil crop [3, 4, 5].

In spite of the outstanding qualities of this crop, due attention has not been given towards a decisive crop improvement programme. This neglect may be as a result of some identified drawbacks. The restriction of the fluted pumpkin to West and part of Central Africa made it foreign to people outside these regions. The seed is recalcitrant in nature [3] and easily loose viability due to its bulkiness and high moisture content and hence cannot be stored for long. This problem is even compounded by the propensity of the seeds to germinate *in situ* while in fruit. The dioecious nature of the plant, inadequate knowledge about its mechanisms of pollination and floral biology coupled with long maturation period and cost of staking deprived the crop of needed breeding researches. Notwithstanding the identified problems, efforts need to be made to address the demand for genetic improvement of this crop so as to enhance its leaf and seed yield. The availability of genetic variation among different strains and within strains provides great scope for crop improvement through judicious selection and breeding to develop the desired genotype [6]. Assessment of genetic diversity is invaluable in crop breeding programme, as it helps in the identification of diverse parental combinations to create segregating progenies with maximum genetic variability [7] and facilitates introgression of desirable genes from diverse germplasm into the available genetic base [8]. Multivariate statistical methods are employed as tools for assessing genetic diversity in crops. Some of the examples of commonly multivariate statistical methods used include canonical analysis, cluster analysis, factor analysis, discriminant analysis and principal component analysis.

Many researchers have used these methods in classifying, summarizing and describing variation patterns in populations of crop genotypes [9, 10, 11, 12, 13, 6, 14, 15, 16]. The use of more than one technique to investigate genetic diversity in crops by many researchers is common because of complementary effects of the techniques on the analysis and allows comparison among the techniques to know which one captures most of the variation and provide clearer and informative display of the relative positions of the genotypes [16]. However, reports on diversity analysis using multivariate statistical methods in fluted pumpkin are inadequate. [17] used PCA and metroglyph to analyse variation on nine accessions of fluted pumpkin collected in Markurdi and found some levels of variation. [15] used cluster analysis to group 35 genotypes of fluted pumpkin collected from Southern Nigeria into four clusters based on their level of similarity. While [16] employed PCA and factor analysis to assay genetic diversity among some selected genotypes of fluted pumpkin and they found out that the two methods though different identified similar characters that discriminated the genotypes. All the authors above carried out their studies at a single location. Therefore, the present study was conducted to evaluate the diversity in fluted pumpkin phenotypic traits at two diverse locations.

MATERIALS AND METHODS

This experiment was conducted at the Teaching and Research Farm Directorate of Federal University of Agriculture, Abeokuta (FUNAAB) (7°25'N, 03°25'E) with sandy loam soil and Teaching and Research Farm of Federal University of Technology, Akure (FUTA) (7°16'N, 05°12'E) with sandy clay loam soil. FUNAAB and FUTA belong to derived savanna and rainforest agro-ecologies respectively. Twenty five (25) matured fluted pumpkin fruits of different genotypes of were collected from 11 states in Nigeria in 2012. The description of the fluted pumpkin genotypes based on states of collection in Nigeria is presented in Table 1. The 25 genotypes were evaluated for two consecutive years (2012 and 2013) at each location. Land preparation involved manual clearing within the sites. The experiment was conducted in a randomized complete block

design (RCBD) with three replications. Each replication had 25 plots of 2meters x 2meters, with 1meter inter-plot spacing. Seeds were first raised in the nursery using saw dust as growth medium as suggested by [18]. Seedlings were transplanted directly on flat ground two weeks after planting. One seedling was transplanted per hole at a spacing of 1 meter by 1 meter resulting in 9 plant stands per plot. Trellises of 2meters x 2meters x 1.5meters high were constructed on each plot to support the vines. Manual weeding was done at 3 weekly intervals to keep the field weed-free. There was no application of fertilizers and pesticides throughout the experimentation. Growth and yield data were collected on four competitive plants on each plot at each site on each genotype using appropriate equipment. Data on number of branches, vine length and number of leaves were collected four weeks after transplanting (4WAT). Also at first marketable leaf yield harvest (8WAT), the following data were collected: number of branches, vine length, number of leaves, vine girth, petiole length, leaf length, leaf width, Internode length, leaf fresh weight, vine fresh weight, marketable leaf yield and leaf area. The leaf area was measured in centimetre square by scanning leaf samples with HP scanner and the area of scanned images were determined using Compu Eye, Leaf and Symptom Area software of [19]. In addition, the following data were collected on fruit: fruit length, fruit circumference, fruit diameter, fruit weight, number of seeds per fruit, seed length, seed girth, seed thickness and seed weight. The raw data were compiled by taking the means of all plants taken for each treatment and replication for different traits in both locations and experimental years. The data were subjected to analysis of variance and covariance [20]. Mean data were standardised and subjected to multivariate analysis. Principal Component Analysis and single linkage cluster Analysis were performed using the SAS package [20].

RESULTS

The scores of the major characters describing the first eight principal component axes are presented in Table 2. Four out of the twenty four principal components had eigen values greater than 2.0. The first eight principal component axes jointly accounted for 90.77% of the total variation among the

genotypes studied. The first principal component axis (PC1) accounted for 35.54% of the total variation. It was loaded with marketable yield characters, which included marketable leaf yield (0.29), leaf fresh weight at harvest (0.28) and marketable leaf, vine fresh weight at harvest and vine length at harvest (0.29). This axis is considered the marketable leaf yield component. PC2 was positively loaded with leaf related traits such as; leaf length at harvest (0.40) and leaf width at harvest (0.39), petiole length at harvest (0.41) and leaf area (0.42) whereas PC3 and PC4 were associated with fruit and seed traits respectively. PC3 was positively loaded for fruit weight (0.45), fruit length (0.37) and number of seeds (0.48) and negatively loaded for number of leaves (-0.22) and number of branches (-0.28). PC4 positively loaded seed length (0.58), seed girth (0.49), seed weight (0.20) and negatively loaded for fruit length (-0.24) and number of seeds (-0.20).

Configurations of the 25 genotypes along the first three principal component axes are shown in Figures 1, 2 and 3. The ordination of the genotypes on axes 1 and 2 (Figure 1) shows that Ftm12, Ftd1, Fta39, Ftw21, Fts33 and Fte42 were most distant from all other genotypes. Figure 2 displayed the graphing of axes 1 and 3 and showed that genotype Ftk16, Ftw20 and Ftg24 were distinct from other genotypes and characters associated with PC1 and PC3 described them. Figure 3 shows another configuration of the genotypes (axes 2 and 3), Fte42 distinguished itself from other genotypes as characters (leaf and fruit size) associated with PC2 and PC3 described it.

Figure 4 shows the dendrogram drawn from SLCA to illustrate the relationship among the twenty five genotypes. At minimum of 0.00 level of similarity, all the twenty five genotypes were distinct from one another, while at a distance of 0.71 all the genotypes had formed a single cluster, indicating that each genotype had at least one neighbour with more than 0.71 level of similarity. The dendrogram grouped the twenty five genotypes into six distinct clusters based on their level of similarity. Table 3 shows the distribution of the genotypes into six different clusters, out of which fifteen were grouped in Cluster IV, three in Cluster I, four in Cluster V while others have single genotype each. The clustering pattern showed that the distribution of the genotypes within clusters

126 did not follow geographical distribution. The mean performance of each cluster for all characters is
127 presented in Table 3. The mean values showed a wide distinction among the clusters. There was a
128 very wide range in marketable leaf yield per plant among the Clusters - Cluster III (370.80) and
129 Cluster VI (176.80). Cluster I was distinct for number of branches at harvest, fruit weight and fruit
130 circumference, Cluster II was outstanding for petiole length while Cluster III was noted for
131 marketable leaf yield, internode length and leaf area. Cluster V and VI were distinct for fruit
132 diameter and vine length respectively.

133 **DISCUSSION**

134 Currently, fluted pumpkin farmers use landraces (local genotypes) due to lack of improved
135 genotypes. Thus, there are unpredictable and low yields, poor quality and low tolerance to diseases
136 and pests. The fact that the genetics of the crop has not been fully understood makes genetic
137 improvement of the crop, which is quite essential to achieve high yield difficult. Hence, there is
138 need to exploit the genetic diversity present in the base population to breed superior and high
139 yielding genotypes for commercial cultivation in order to meet increasing demand for the crop. In
140 the process of genetic improvement of any crop, genetic diversity among germplasm plays a major
141 role, since it opens the way to determine the most divergent parents based on the contribution of
142 different qualitative and quantitative traits, for further utilisation in any hybridisation programme
143 [6]. From the result obtained from PCA, it was clear that though vine length and number of leaves
144 contributed significantly to marketable leaf yield, the negative correlation observed between
145 fruit/seed traits and number of leaves and branches in PC3 might implies that genotypes with
146 numerous leaves and branches might not be a good fruit and seed yielder. Configuration of the
147 genotypes along the axes of PC1 and PC2, PC1 and PC3 revealed that genotypes Ftd1, Fta39,
148 Ftw21 and Fte42 are high-yielding. This suggests that direct selection could be made on these
149 genotypes. Heterosis could be achieved by crossing between and any of these genotypes.

The genotypes were grouped into six clusters, each containing fluted pumpkin genotypes sharing common attributes and being similar to one another. This grouping of the genotypes by SLCA did not follow a particular pattern. Some genotypes from the same source were grouped together while others from different sources were clustered together. This has, in some cases been attributed to lack of similarity between genetic and geographical diversity due to movement of germplasm through seed exchange [21, 22, 15]. According to [23], exchange of seed is a common practice among African farmers. [24] reported that commercial fluted pumpkin growers in the middle belt of Nigeria source their fluted pumpkin seeds from the south eastern states of Nigeria. Similar practices have been reported in Zambia for Zambian cucurbit (*Cucurbita moschata* Duch.) by [21]), and in Tanzania for Bambara groundnut [22].

The clear distinction in the mean values of characters across the clusters might make improvement programme in fluted pumpkin through direct varietal selection easy [15]. In addition, clusters that showed some character distinctions could be employed for hybridization purpose. Clusters III and VI for instance, recorded highest marketable leaf yield per plant and largest leaf size but poor seed yield while cluster VI had longest vine length and high seed weight. Hence, a high yielding progeny, which will have a better combination of vine length, number of leaves, large leaf size and seed weight could be selected from a cross between suitable genotypes in clusters III and VI. Interestingly genotypes from clusters III and VI are from South Eastern Nigeria where the crop is believed to originate, hence the crop has large diversity in this region [3, 24, 23, 15].

The outcome of single linkage cluster analysis seemed to be consistent with the result obtained from the PCA configurations of the 25 genotypes along the first two principal component axes. Similar finding has also been reported in cowpea *Vigna unguiculata* (L) by [25], in ‘egunsi’ melon *Citrullus lanatus* (Thunb) by [26], and in vegetable amaranth *Amarantus tricolor* by [6]. These findings are in concordance with earlier reports that both PCA and SLCA can disclose complex relationships between taxa in a more understandable way and with equal effectiveness [27,

28, 6]. The PCA and SLCA when used together proved to be effective methods in grouping the fluted pumpkin genotypes and that may facilitate effective management and utilization of the crop in future breeding programmes [23, 16].

In conclusion, the two multivariate statistical techniques (PCA and SLCA) used are appropriate for the classification of diversity among fluted pumpkin germplasm and therefore recommended for future use. The single linkage cluster analysis grouped the 25 genotypes based on their level of similarity for some characters, thus selection of parents for hybridization can be made from within the clusters.

REFERENCES

1. Okoli BE. *Telfairia pedata* (Sm. ex Sims) Hook. [Internet] Record from PROTA4U. van der Vossen, H.A.M. & Mkamilo, G.S. (Editors). PROTA (Plant Resources of Tropical Africa / Ressources végétales de l'Afrique tropicale), Wageningen, Netherlands. 2007. <<http://www.prota4u.org/search.asp>>. Accessed 19 June 2014.
2. Odiaka NI, Schippers RR. *Telfairia occidentalis* Hook. F, in G.J.H. Grubben and O. A. Denton (Editors), Plant Res. Trop. Afr. 2: Vegetables, (PROTA Foundation, Netherlands/Backhuys Publishers: Leiden, Netherlands/CTA Wageningen, Netherlands. 2004; 522-527.
3. Akoroda MO. Ethnobotany of *Telfairia occidentalis* (Cucurbitaceae) among Igbos of Nigeria. Econ. Bot. 1990; 44(1): 29-39
4. Ehiangbonare JE. Conservation studied on *Telfairia occidentalis* Hook.F. indigenous plant used in enthnomedicinal treatment of anemia in Nigeria. African J. Agric. Research. 2008; 3(1): 74-77.
5. Fayeun LS, Odiyi AC, Makinde SCO, Aiyelari OP. Genetic Variability and Correlation Studies in the Fluted Pumpkin (*Telfairia occidentalis* Hook. F.). Journal of Plant Breeding and Crop Science. 2012; 4(10). pp. 156-160.
6. Shukla S, Bhargava A, Chatterjee A, Pandey AC, Mishra B. Diversity in phenotypic and nutritional characters in vegetable amaranth (*Amaranthus tricolor*), a nutritionally underutilized crop. (www. Interscience .wiley.com) DOI. 2009; 10.1002/jsfa.3797
7. Barrett BA, Kidwell KK. AFLP-based genetic diversity assessment among wheat cultivars from the Pacific Northwest. Crop Sci. 1998; 38:1261–1271.
8. Thompson JA, Nelson RL, Vodkin LO. Identification of diverse soybean germplasm using RAPD markers. Crop Sci. 1998; 38:1348–1355.
9. Rhodes AM, Martins FW. Multivariate studies of variation in yams. J. Am. Soc. Hortic. Sci. 1972; 97: 685-688.
10. Sharma SK, Rana ND. A study of genetic divergence in a collection of small-seeded soybean accessions. Trop. Agric. (Trinidad). 1986; 63(4): 293-296.
11. Ariyo OJ. Multivariate analysis and the choice of parents for hybridization in okra (*Abelmoschus esculentus* (L.) Moench). Theor. Appl. Genet. 1987; 74:361-363.
12. Raji AA. Assessment of genetic diversity and heterotic relationship in African improved and local cassava (*Manihot esculentus* Crantz) germplasm. Ph.D. thesis University of Ibadan, Nigeria. 2003.

13. Nassir AL, Ariyo OJ. Multivariate analysis of variation of field- planted upland rice (*Oriza sativa* L.) in tropical habitat. Malays. Appl. Biol. 2007; 36(1): 47-57.
14. Makinde SCO, Ariyo OJ. Multivariate analysis of genetic divergence in twenty two genotypes of groundnut (*Arachis hypogaea* L.). J. Plant Breeding an Crop Sci. 2010; 2(7): 192-204.
15. Fayeun LS and Odiyi AC. Cluster Analysis of Genetic Divergence in Thirty- Five Genotypes of The Fluted Pumpkin (*Telfairia occidentalis*) Collected from Southern Nigeria. Proceedings of the 36th Annual conference of Genetics Society of Nigeria, held at University of Calabar, 15th – 18th October, 2012. {Editors: Uyoh EA, Iwo GA, Okon B, Ittah MA, Ibom LA, Etta H, Udensi O.}.pp.197-206. 2012.
16. Odiyi AC, Fayeun LS, Makinde SCO, Adetunji AT. Analysis of variation among fluted pumpkin (*Telfairia occidentalis*) accessions by Factor Analysis and Principal Component Analysis. Canadian Journal of Plant Breeding. 2014; 2 (2) pp. 80-86.
17. Odiaka NI. Morphological diversity among local germplasm of fluted pumpkin (*Telfairia occidentalis* Hook. F.) collected in Makurdi, Nigeria. *Journal of Food, Agriculture & Environment* 2005; .3 (2): 1 9 9 - 2 0 4.
18. Akoroda MO, Adejoro MA. Pattern of vegetative and sexual development of *Telfairia occidentalis* Hook. F. Trop. Agric. (Trinidad) 1990; 67(3): 243-247.
19. Bakr EM. Anew software for measuring leaf area, and area damaged by *Tetranychus urticae* Koch. Journal of Applied Entomology. 2005; 129 (3): 173-175
20. Statistical Analysis System (SAS). Online Doc. Version 9.0. Cary,NC: SAS Institute Inc. 2000.
21. Gwanama C, Nichterlein K. Importance of cucurbits to small-scale farmers in Zambia. Zambia J. Agric. Sci. 1995; 5: 5-9.
22. Ntundu WH. Genetic diversity of Bambara groundnut (*Vigna subterranean* (L.) Verdc.) in Tanzania. Ph.D thesis, the Royal Veterinary and Agricultural University, Copenhagen, Denmark. 2002.
23. Fayeun LS. Investigation into genetic diversity of the fluted pumpkin *Telfairia occidentalis* (Hook. F.) in Southern Nigeria. Unpublished M. Tech. Thesis, Federal University of Technology, Akure, Nigeria. 2011.
24. Odiaka NI, Akoroda MO, Odiaka EO. Diversity and production methods of fluted pumpkin (*Telfairia occidentalis* Hook F.); Experience with vegetable farmers in Makurdi, Nigeria. African Journal of Biotechnology. 2008; 7 (8) 944-954.
25. Aremu CO, Adebayo MA, Ariyo OJ, Adewale BD. Classification of genetic diversity and the choice of parents for hybridization in cowpea (*Vigna unguiculata* (L) Walp) for humid savanna ecology. African J. Biotechnology 2007; 6(20) 2333-2339.
26. Idehen EO, Kehinde OB, Ariyo OJ.. Numerical analysis among Nigerian accessions of ‘Egunsi’ melon (*Citrullus lanatus* (Thunb.) Matsum & Nakai). Journal of American Sci. 2007; 3(2):7-15.
27. Rezai A, Frey KJ. Multivariate analysis of variation among wild oat accessions – seed characters. Euphytica. 1990; 49:111–119.
28. Abede D, Bjornstad A. Genetic diversity of Ethiopian barleys in relation to geographical regions, altitude range and agro-ecological zones as an aid to germplasm collection and conservation strategy. Hereditas. 1996; 124:17–29.

264

265 **Table 1. Descriptions of the 25 fluted pumpkin genotypes based state of collection in Nigeria.**

266

S/N	Genotype	State of Collection
1	Ftd1	Edo
2	Ftm11	Imo
3	Ftm12	Imo
4	Ftr13	Anambra
5	Ftk16	Ekiti
6	Ftk17	Ekiti
7	Fta39	Abia
8	Ftw20	Kwara
9	Ftw21	Kwara
10	Ftg22	Ogun
11	Ftg23	Ogun
12	Ftg24	Ogun
13	Ftn44	Ondo
14	Ftn45	Ondo
15	Ftn47	Ondo
16	Ftn43	Ondo
17	Ftn46	Ondo
18	Fte40	Enugu
19	Fte41	Enugu
20	Fte42	Enugu
21	Fty28	Oyo
22	Fty29	Oyo
23	Fty30	Oyo
24	Fts33	Osun
25	Fts34	Osun

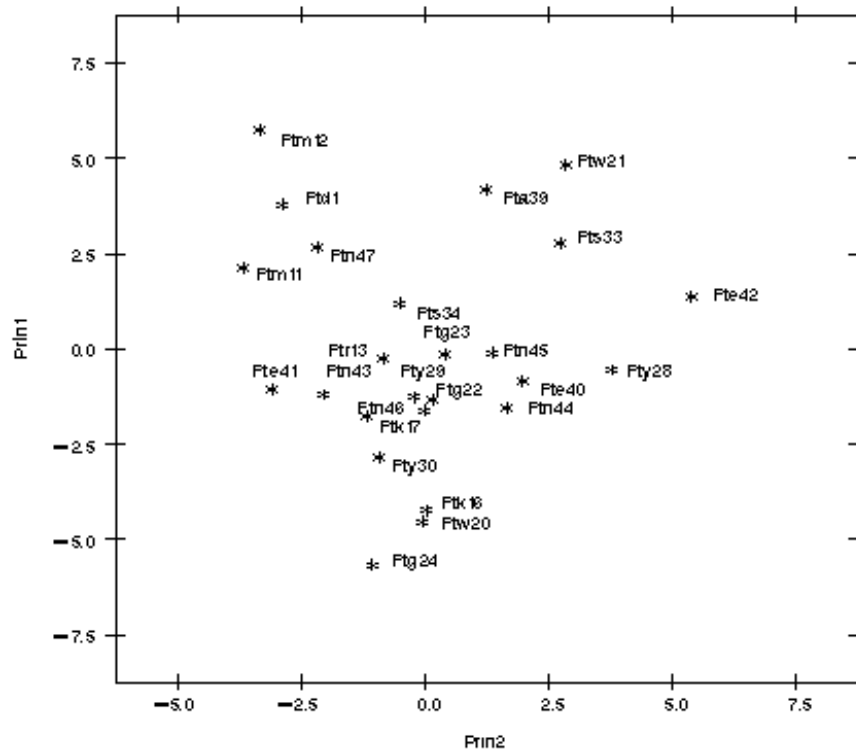
267

268

269

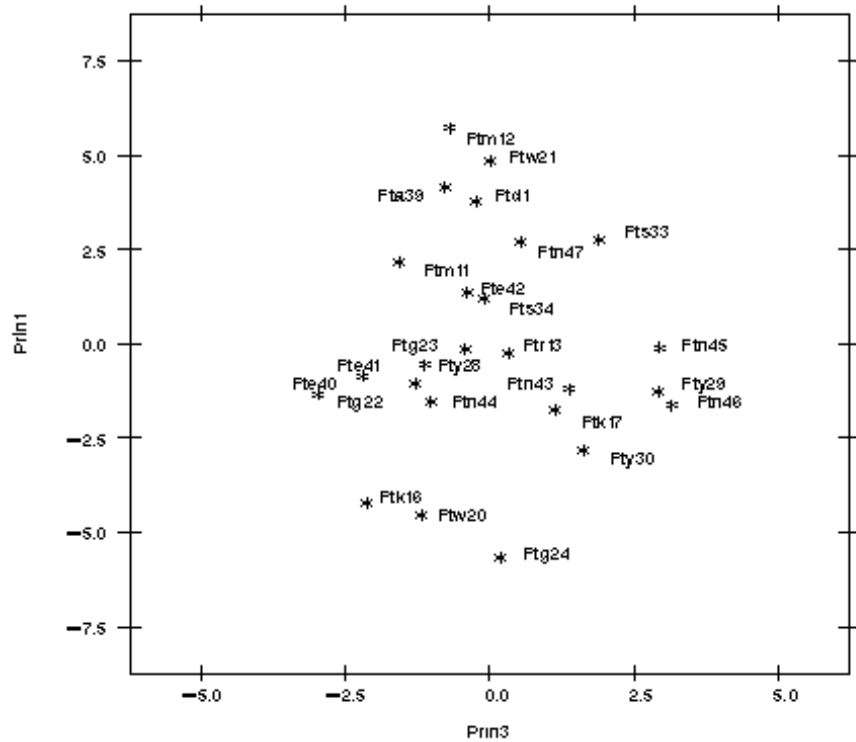
270 Table 2. Eigen vector for agronomic characters of the first eight principal components

Characters	Eigenvectors							
	PC1	PC2	PC3	PC4	PC5	PC6	PC7	PC8
Vine length (cm) 4WAP	0.22	-0.13	-0.07	0.07	-0.36	0.42	-0.38	-0.13
Number of leaves 4WAP	0.29	0.00	-0.05	-0.012	0.14	0.07	-0.35	-0.16
Number of branches 4WAP	0.22	0.03	-0.12	-0.28	0.35	-0.07	-0.30	-0.44
Vine length (cm) at harvest	0.29	0.05	-0.17	0.039	-0.14	0.22	0.09	-0.01
Number of leaves at harvest	0.28	-0.10	-0.22	-0.15	-0.02	0.10	0.14	0.27
Number of leaves at harvest	0.22	-0.05	-0.28	-0.30	0.12	0.11	0.30	0.19
leaf fresh weight (g) at harvest	0.28	0.16	-0.08	0.03	-0.04	-0.36	0.06	-0.08
Vine fresh weight (g) at harvest	0.29	0.16	-0.07	0.05	-0.04	-0.30	0.12	0.05
Marketable leaf yield (g)	0.29	0.16	-0.08	0.04	-0.04	-0.33	0.08	-0.04
Vine girth (cm) at harvest	0.26	-0.12	-0.23	-0.00	-0.12	-0.06	0.11	0.11
Leaf length (cm) at harvest	-0.02	0.40	-0.05	0.03	-0.03	0.14	-0.03	0.09
Leaf width (cm) at harvest	0.06	0.39	0.04	-0.04	-0.01	0.21	0.09	0.25
Petiole length (cm) at harvest	0.00	0.41	0.04	0.06	0.04	0.02	-0.20	0.13
Internode length (cm) at harvest	0.02	0.40	0.07	0.09	-0.07	0.05	0.00	-0.30
Leaf area (cm ²) at harvest	0.03	0.42	-0.02	0.01	0.02	0.20	0.02	0.05
Fruit weight (g)	0.18	0.04	0.45	-0.15	-0.13	-0.02	0.13	-0.25
Fruit length (cm)	0.15	-0.07	0.37	-0.24	0.06	0.31	0.39	-0.13
Fruit circumference (cm)	0.24	-0.09	0.23	0.01	0.37	0.21	0.01	-0.05
Fruit diameter (cm)	0.20	-0.10	0.22	0.15	0.42	-0.14	-0.26	0.42
Number of seeds	0.05	0.08	0.48	-0.20	-0.04	-0.19	-0.01	0.25
Seed weight (g)	0.23	-0.07	0.18	0.20	-0.21	0.09	-0.34	0.25
Seed length (cm)	0.11	-0.01	0.00	0.58	0.18	-0.08	0.21	-0.27
Seed girth (cm)	0.18	-0.12	0.09	0.49	0.06	0.22	0.21	0.02
Seed thickness (cm)	0.18	-0.11	0.19	-0.04	-0.50	-0.24	-0.01	-0.06
Eigen value	8.53	5.19	2.7	2.1	1.05	0.91	0.69	0.62
Proportion of variance (%)	35.54	21.62	11.25	8.74	4.37	3.81	2.85	2.58
Cumulative variance (%)	35.54	57.17	68.42	77.16	81.53	85.34	88.19	90.77



271
272
273
274
275

Figure 1. Configuration of twenty five genotypes under axes 1 and 2



276
277
278

Figure2. Configuration of twenty five genotypes under axes 1 and 3

279

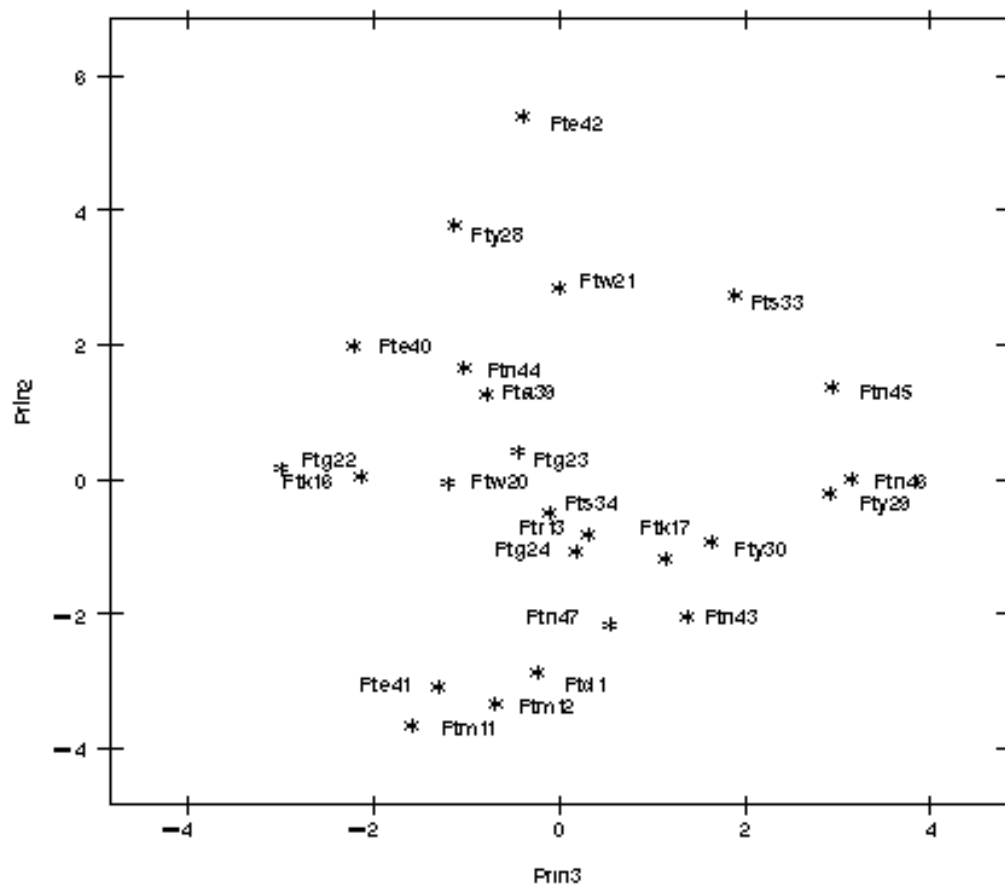


Figure 3. Configuration of twenty five genotypes under axes 2 and 3

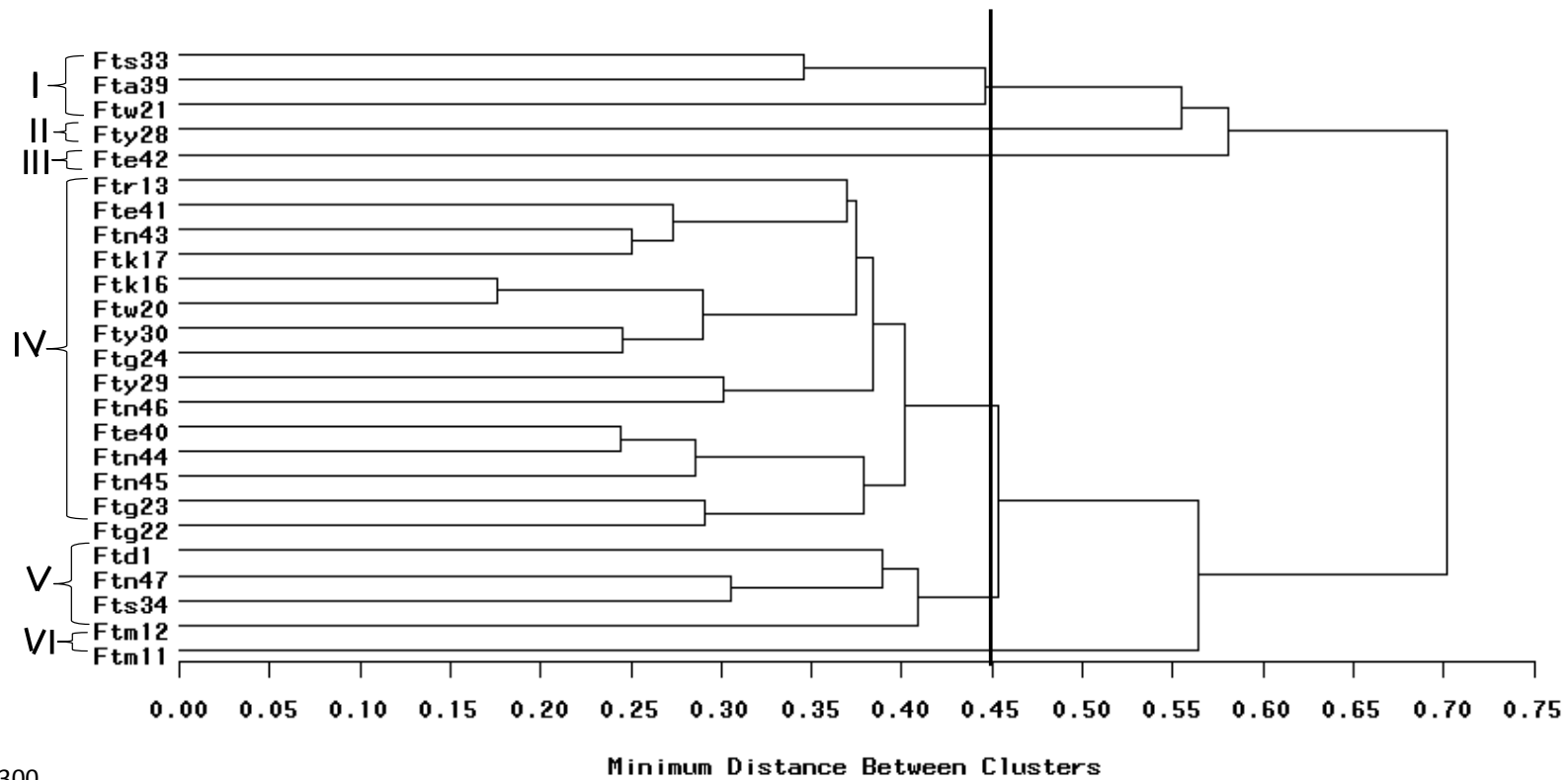


Figure 4. Dendrogram resulting from Single Linkage Cluster Analysis of twenty five genotypes of fluted pumpkin.

309

310

Table 3. Characteristics pattern of clusters of the 25 fluted pumpkin genotypes by single linkage cluster analysis

Character	Clusters					
	I	II	III	IV	V	VI
	Fts33,Fta39, Ftw21	Fty28	Fte42	Ftr13, Fte40, Ftw20, Fty30, Ftk16, Ftg22, Ftg23, Ftn46, Ftn46, Fte41, Fty29, Ftn43, Ftg24, Ftk17,Ftn45	Ftm12, Fts34, Ftn47, Ftd1	Ftm11
Vine length 2WAP (cm)	91.63	70.50	67.40	70.98	90.08	133.10
Vine length 10WAP (cm)	181.50	148.20	182.30	136.33	170.50	198.20
Number of leaves 10WAP	74.40	47.95	48.37	50.33	77.85	82.68
Number of branches 10WAP	6.20	4.74	4.18	4.74	6.05	5.87
Marketable leaf yield (g)	302.53	240.40	370.80	135.31	271.60	176.80
Vine girth 10WAP (cm)	1.53	1.37	1.47	1.36	1.71	1.79
Petiole length (cm)	9.39	11.31	10.15	7.68	6.45	5.49
Internode length 10WAP (cm)	9.26	10.13	11.19	7.97	6.81	6.64
Leaf area 10WAP (cm ²)	310.63	341.50	382.60	217.90	159.75	150.70
Fruit weight (g)	6.37	2.75	5.45	4.30	5.60	4.15
Fruit length (cm)	54.67	36.00	36.00	46.80	52.00	47.00
Fruit circumference (cm)	71.33	60.00	60.00	61.93	68.50	63.00
Fruit diameter (cm)	14.17	12.50	12.60	12.18	14.38	11.50
Seed weight (g)	18.45	18.00	13.20	12.77	20.68	21.00
Seed length (cm)	3.42	4.40	4.00	3.42	3.78	3.60
Seed width (cm)	3.86	4.40	3.80	3.63	4.29	4.50

