

Genetic Diversity of Selected Upland Rice Genotypes (*Oryza sativa* L.) for Grain Yield and Related Traits.

ABSTRACT

Seventy-seven upland rice genotypes including popular cultivars in Nigeria and introduced varieties selected from across rice growing regions of the world were evaluated under optimal upland ecology. These genotypes were characterized for 10 traits and the quantitative data subjected to Pearson correlation matrix, Principal Component Analysis and cluster analysis. Yield and most related component traits exhibited higher PCV compared to growth parameters. Yield had the highest PCV (41.72%) while all other parameters had low to moderate GCV. Genetic Advance (GA) ranged from 9.88% for plant height at maturity to 41.08% for yield. High heritability estimates were recorded for 1000 grain weight (88.71%), days to 50% flowering (86.67%) and days to 85% maturity (71.98%). Furthermore, grain yield showed significant positive correlation with days to 50% flowering and number of panicles m⁻². Three cluster groups were obtained based on the UPGMA and the first three principal components explained about 64.55% of the total variation among the 10 characters. The PCA results suggests that characters such as grain yield, days to flowering, leaf area and plant height at maturity were the principal discriminatory traits for this rice germplasm.

Keywords: Cluster analysis; Germplasm; Heritability; secondary traits; UPGMA

1. INTRODUCTION

Rice (*Oryza sativa* L.) is an important cereal grown and consumed the world over to meet the daily calorie needs of ever increasing world population mainly in Asia and Sub-Saharan Africa. This important cereal is cultivated and consumed across Nigeria but its production is characterized by poor yields resulting from use of low farm inputs and cultivation of unimproved

cultivars with poor yield potentials. Germplasm characterization and evaluation is a basic prerequisite for a successful breeding programme and can lead to identification of traits with high heritability and appreciable association with yield [1,2]. Agro-morphological characterization of germplasm is fundamental to provide the preliminary information for planning and initiating a breeding programme [3]. The amount of genetic variability present in a germplasm is also essential to crop improvement and can be exploited by plant breeders for yield improvement [4]. Until germplasm collections have been properly evaluated and their attributes known to breeders, they have little practical use in crop genetic improvement. Understanding the genetic variability among genotypes in a germplasm collection serves as a guide for parental selection aimed at hybridization to introgress desired traits into new cultivars [5]. For selection to be effective there must be ample heritable genetic variability within the gene pool under evaluation.

Traditional rice genotypes that still exist in the Nigeria upland rice ecosystems can provide the genetic diversity needed to develop improved high yielding rice varieties having farmers' preferred traits. Challenges involved with improvement of upland rice landraces can be mitigated via introduction of new genes from other rice genotypes, thereby creating wide genetic variation for selection of promising progenies with good adaptation and agronomic traits. Indirect selection for yield based on yield components is possible if the traits associated with yield are highly heritable and positively correlated with yield. Heritability, either in the broad sense (H^2) or narrow sense (h^2), of a trait is important in determining its response to selection. This helps to estimate the degree of transmissibility of selected traits of interest to progenies during a breeding programme [6]. Genetic advance has a direct relationship between heritability and response to selection. High genetic advance with high heritability estimates offer the most effective conditions for breeders to quickly select and advance desired traits in a population [7]. Rice plant

is known to exhibit great morphological variation, particularly in vegetative and reproductive traits such as plant height, leaf length, days to flowering, yield and associated yield components [8]. The current study assessed the level of diversity and degree of association existing between grain yield and its related component traits to identify potential suitable traits that might contribute to future upland rice genetic improvement programmes.

2. MATERIALS AND METHODS

2.1 Genetic materials and planting

The plant materials included 77 genotypes from diverse genetic backgrounds and origins (Table 1). The experiment was carried out at AfricaRice Centre, Ibadan, Nigeria during 2015 planting season. Prior to sowing, seeds were incubated in the oven set at 37 °C for 12 h to break seed dormancy. Seeds were sown directly, three seeds per hill and thinned to two seedlings 21 days after sowing (DAS) at a spacing of 0.2 m within and between rows. The design was 11 x 7 alpha lattice with four replications with plot area of 1 m² having 25 stands per plot. A pre-drilling base application of 200 kg ha⁻¹ of NPK (15-15-15) was made, followed by a total of 100 kg ha⁻¹ of urea in two applications of 35 kg ha⁻¹ at 21 days after seeding and 65 kg ha⁻¹ at the panicle initiation. Two manual weeding were carried out.

[Table 1 near here]

2.2 Data Collection and Statistical Analyses

Twelve uniform plants excluding the border rows in each plot were measured for plant height at maturity, number of panicles per plant, tiller number at 60 days after sowing, average leaf area and number of panicles per meter square. Each plot was recorded for heading date when 50% of the plants in the plot were headed and days to 85% maturity according to the IRRI standard

evaluation system (SES). Grain yield per plot was sampled by cutting the matured plants from the bottom (right above the soil surface). Plants sampled from each plot were put into a paper bag and air dried inside the glass house for 5-7days. The dried samples were then threshed and measured for total grain yield per plot and 1000 grain weight.

The data collected were subjected to statistical analysis using [9] and R statistical packages. The plot means for each character were subjected to analysis of variance using the method of [10]. Yield and its components were used to estimate the genotypic and phenotypic variances according to [11]. The variance components were used to compute the genotypic coefficient of variation (GCV), phenotypic coefficient of variation (PCV), broad sense heritability and expected genetic advance.

The genotypic variance (V_g), environmental variance (V_e), genotypic (GCV) and phenotypic (PCV) coefficient of variation components were computed using the formulae suggested by Burton (1952) as follows:

$$\text{Genotypic variance: } V_g = \frac{MSG - MSE}{r}$$

Where MSG is the mean square of accessions, MSE is mean square of error, and r is number of replications.

$$\text{Phenotypic variance: } V_p = V_g + V_e$$

where V_g is the genotypic variance and V_e is the mean squares of error.

$$\text{Genotypic coefficient of variation (GCV): } GCV \% = \frac{\sqrt{V_g}}{\bar{x}} \times 100$$

$$\text{Phenotypic coefficient of variation (PCV): } PCV \% = \frac{\sqrt{V_p}}{\bar{x}} \times 100$$

Where, GCV% = Genotypic coefficient of variation; V_g = Genotypic variance; PCV % = Phenotypic Coefficient of variation; V_p = Genotypic variance;

93 Heritability (Broad sense): $H_b^2 = \frac{V_g}{V_p}$

94 Expected genetic advance (GA): $GA\% = K \times V_p \times h_B^2 \times 100$

95 Where, $K = 2.06$ at 5% selection intensity for trait; V_p = Phenotypic variance for trait; $h_B^2 =$

96 Broad Sense heritability of the trait; Genetic advance as %age of mean is calculated as,

97 $GA\% = K \times \frac{\sqrt{V_p}}{\bar{x}} \times h_B^2 \times 100$

98 Pearson's correlation coefficients were computed to evaluate the relationship among the
99 observed variables and the data analyzed using Unweighted Paired Group Method based
100 Centroids (UPGMC). Genetic relationships were also calculated and a dendrogram derived to
101 show the morphological relatedness of the upland rice cultivars under study. Principal
102 component analysis was employed to reveal the underlying sources of morphological variability
103 within the germplasm.

104 **3. RESULTS AND DISCUSSION**

105 **3.1 PCV, GCV, Genetic Advance and Heritability of Estimated Traits**

106 The mean performance of 77 upland rice genotypes based on 10 yield related traits indicated
107 significant variability among the rice germplasm evaluated with respect to most of the measured
108 characters (Table 2). Yield and most of its component traits exhibited higher phenotypic
109 coefficient of variation (PCV) compared to growth parameters such as plant height and leaf area.
110 Low to moderate PCV was recorded for most of the traits except for yield (Table 2). Yield had
111 the highest PCV (41.72%) while number of panicles per plant had the lowest PCV. Most of the
112 characters in this experiment had low to moderate genotypic coefficient of variation (GCV). The
113 GCV ranged from 6.19% for days to maturity to 28.85% for yield. Phenotypic coefficient of
114 variation was higher than the GCV for all the observed parameters. The high phenotypic and
115 genotypic coefficient of variation observed for grain yield indicates the existence of sufficient

variation among the genotypes for potential yield improvement through selection. This observation is consistent with [17,18] but contradicts [19] who reported low PCV and GCV for grain yield among 15 rice genotypes evaluated in eastern Nigeria. The extent of environmental influence on a particular trait is determined by the magnitude of the difference between PCV and GCV. Slight differences indicate minimum influence of environmental effects and a higher role of genetic effects in the expression of the given trait under consideration. The predominant role of the environment in the expression of this trait might be attributed to the wide differences observed between PCV and GCV. Moderate to low phenotypic and genotypic variances were also exhibited for days to 50% flowering, 1000 seed weight and days to 85% maturity. These results contradict [17] who reported high phenotypic and genotypic variances for 50% flowering and 1000 seed weight. Minimum differences were recorded between GCV and PCV values for 1000 grain weight, days to flowering and number of panicles, indicating insignificant influence of the environment and good response to selection during a breeding programme. This is in accordance with [20,19] that reported the genetic control of days to flowering and number of panicles in rice. Heritability estimates defined as the proportion of observed variation that can be attributed to genetic variances are known to be unique to the given population under study, the growing environment, and the experimental design employed for the study [12]. The highest level of heritability (88.71%) was seen for 1000 grain weight while the lowest heritability estimates were observed for number of tillers at 60 DAS (15.16%). High heritability in the broad sense recorded for 1000 seed weight, days to 50% flowering (86.67%), days to 85% maturity (71.98%), and number of panicles (63.89%) shows that these traits can be easily evaluated phenotypically in the field and are transferrable to their offspring during a breeding programme. Genetic Advance (GA) ranged from 9.88% for plant height at maturity to 41.08% for yield. The

average of GA values in growth traits was lower than the average of GA values for yield and yield components (Table 2). Previous studies [8] had reported high heritability and genetic advance for yield, days to flowering, and flag leaf length-to-width ratio in rice. Moderate to high estimates of heritability, GA and GCV observed for some of the traits such as yield, 1000 seed weight and number of panicles could be explained by additive gene action. This suggests that genetic improvement of these traits can be achieved through mass selection [21]. Traits such as plant height at maturity, tiller number at 60 DAS, number of filled grains and number of panicles, which exhibited low heritability estimates, are likely to be more influenced by the environment and selection must be based on progeny tests or in later generations of selfing. High broad sense heritability estimates and genetic advance further indicates that these parameters are under the control of additive genetic effects. High heritability and genetic advance for grain yield had earlier been reported [13,14,15]. Previous studies [16] suggested that high broad sense heritability; PCV and GCV for yield and yield related traits are good predictors for high grain yield in crops..

[Table 2 near here]

3.2 Genetic similarity among evaluated rice genotypes.

The hierarchical cluster analysis based on 10 agronomic characters is presented in Fig. 1. Three major groups were observed among 77 upland rice genotypes based on multivariate analysis. Cluster 1 contained 28 genotypes or 36.36% of all the genotypes. Cluster 3 was made up of 26 genotypes (33.77%) while cluster 2, having 23 genotypes, was the smallest cluster. The result of the cluster analysis shows minimal relatedness among regions. As previous study had reported [24], clustering of the genotypes showed minimum relationship between geographic regions and diversity. Selecting parental materials from the diverse clustered groups identified in this study

for hybridization might result in segregants with best combinations of superior alleles for various traits such as high yield potential, increased number of panicles and earliness. For instance, high yielding varieties such as IR 68704-145-1-1-B, CIRAD 3941 (cluster 1) and ITA 301 (cluster 2) could be deployed to significantly improve the grain yield of low yielding cultivars like Ebonyi local, Igbemo Red, Igbemo White, Ofada 3 and Ofada 1 grouped in clusters 1 and 3. Since number of panicles per meter square positively associated with grain yield, ITA 315 and ITA 117 from cluster 3 with the highest mean for this trait might be suitable parents for breeding programs aimed at increasing yield through indirect selection for increased number of panicles.

[Figure 1 near here]

3.3 Association between Traits

The relationships existing between 10 quantitative traits represented as correlation coefficients are presented in Table 3. Grain yield was positively correlated with days to 50% flowering ($r=0.22$), days to maturity ($r=0.21$), number of panicles m^{-2} ($r=0.25$) and number of tillers at 60 DAS ($r=0.13$). Positive associations were also observed between days to maturity, leaf area ($r=0.18$), and filled grain ($r=0.17$), while plant height showed positive significant correlation with 1000SW ($r=0.22$) and filled grain ($r=0.27$). Thousand grain weight (1000GW) also exhibited negative association with number of days to flowering ($r=-0.26$) and number of panicle m^{-2} ($r=0.25$) and had no association with plant yield (Table 3). The degree of association among traits is an important factor when dealing with a complex character such as yield that is controlled by many genes and highly influenced by the environment [10]. The positive significant phenotypic correlations between yield and some of the traits are indications that selection in favour of these traits can lead to positive indirect selection for high grain yield [17]. The negative correlation observed between yield and some traits in this experiment suggests that

indirect selection of these traits for improved grain yield might not be successful. Positive but low correlations between yield per meter square and days to flowering, days to 85% maturity and number of panicles per meter square shows that selection in favour of these parameters might lead to improved grain yield. Previous studies [19] reported high positive correlations between grain yield and all the quantitative characters studied except for days to booting, days to 50% heading and unproductive tiller numbers among 15 rice genotypes in Nigeria. Also, high positive correlations were reported for days to 50% flowering and plant height at maturity; number of grains per panicle and 1000 grain weight among 123 accessions of *Oryza glaberrima* and *O. sativa* [23].

[Table 3 near here]

3.4 Principle Components and Scatter Plot of Genotypes

The results of principal components analysis (PCA) partly confirmed the results from cluster analysis. The first three PCA accounted for 64.6% of total variation for which PC1 showed 27.6% of the variation, PC2 and PC3 explained 24.93% and 12.02% of total variation, respectively (Table 3). Grain yield, days to flowering and days to maturity had significant contributions to PC1 with days to maturity having the highest weight. Leaf area, plant height at maturity and number of panicles were also among the highest contributors to the observed variation based on PC2 while number of tillers at 45 days after sowing was the source of highest variations in PC3. Principal component analysis measures the contribution of each component or independent impact of a particular character to the total variance observed in a given population in relation to the traits of interest to the breeder. PCA has been used to determine the optimum number of clusters [25], to complement cluster analysis [26], and to investigate patterns of genetic diversity [27]. Principal component analysis (PCA) was used to reduce the complexity of

the data set and to partition the observed variation within traits based on their degree of importance [28]. Days to 50% flowering, days to 85% maturity and yield were the main principal discriminatory characteristics of the studied germplasm. This indicates that resources and time can be saved by concentrating on these characters during selection and advancement in this population. The results of this study are not in agreement with earlier reports [29] that leaf width, number of grains, and panicle length contributed more to the variation among 39 lowland rice varieties evaluated in Nigeria. This might be due the different rice ecologies (lowland and upland) under which these two studies were conducted. Using PCA, the numbers of traits controlling the observed phenotypic variation within the germplasm collection were identified and this might be useful during selection in a breeding programme.

[Table 4 near here]

Distribution of traits and genotypes based on the biplot analysis is presented in Figure 2. Genotypes 03 and 57 had the highest yield but also exhibited late flowering and maturity. The output from the biplot confirms the results obtained in the correlation analysis. Positive correlation was observed between yield, days to flowering, and days to maturity with stronger association existing between yield and days to flowering than days to maturity (Figure 2). Weaker but positive correlation was seen between grain yield and number of filled grain.

[Figure 2 near here]

4. Conclusions

The results revealed significant diversity among 77 upland rice genotypes evaluated for morphological variability. Majority of the traits had high heritability and genetic advance. The 77 lines were clustered into three main groups with days to 85% maturity and yield as the main discriminatory traits of the studied germplasm. The study showed that number of days to 50%

231 flowering and number of panicles m^{-2} are the principal secondary traits that could be exploited
232 by breeders for indirect selection to achieve higher genetic gain in grain yield within this
233 germplasm.

234 **References**

- 235 1. Habib SH, Bashir MK, Khalequzzaman M, Ahmed MS, Rashid ESMH. Genetic analysis and
236 morpho-physiological selection criteria for traditional biroi Bangladesh rice
237 germplasm. *Journal of Biological Science*. 2005;5:315–318.
- 238 2. Yang W, Peng S, Laza RC, Visperas RM, Dionisio-Sese ML. Grain yield and yield attributes
239 of new plant type and hybrid rice. *Crop Science*. 2007; 47: 1393-1400.
- 240 3. Lin MS. Genetic base of Japonica rice varieties released in Taiwan. *Euphytica* 1991; 56: 43-
241 46.
- 242 4. Idahosa DO, Alika JE, Omoregie AU. Genetic variability, heritability and expected genetic
243 advance as indices for yield and yield components selection in Cowpea (*Vigna*
244 *ungiculata* (L.) Walp. *Academia Arena*. 2010; 5: 22-26.
- 245 5. Nayak AR, Chaudhury D, Reddy JN. Genetic divergence in scented rice. *Oryza*. 2004; 41:79-
246 82.
- 247 6. Sabesan T, Suresh R, Saravanan K. Genetic variability and correlation for yield and grain
248 quality characters of rice grown in coastal saline lowland of Tamilnadu. *Electrical*
249 *Journal of Plant Breeding*. 2009;1: 56-59.
- 250 7. Larik AS, Malik SI, Kakar AA, Naz MA. Assessment of heritability and genetic advance for
251 yield and yield components in *Gossypium hirsutum* L. *Scientific Khyber*. 2000; 13:
252 39-44.
- 253 8. Sohrabi M, Rafii MY, Hanafi MM, Siti Nor Akmar A, Latif MA. Genetic diversity of upland
254 rice germplasm in Malaysia based on quantitative traits. *The Scientific World*
255 *Journal*. 2012.
- 256 9. Breeding Management System. 2015.
- 257 10. Steel RGB, Torrie JH. *Principles and Procedures of Statistics*. 1980.
- 258 11. Prasad SR, Prakash R, Sharma CM, Haque MF. Genotypic and phenotypic variability in
259 quantitative characters in oat. *Indian Journal of Agricultural Sciences (India)*. 1981.
260

- 261 12. Fischer KS, Fukai SI, Kumar A, Leung H, Jongdee B. Field phenotyping strategies and
262 breeding for adaptation of rice to drought. *Frontiers Physiology*. 2012;3: 282.
- 263 13. Li W, Song TM. Estimates of genetic parameters for 13 quantitative traits in a recombined
264 high oil maize population of IHO [(80) x Alexo (C23)]. *Acta Agronomica Sinica*.
265 1991;17:470-475.
- 266 14. Jha PB, Ghosh J. Genetic variability in fodder maize *Journal of Research, Birsa Agricultural*
267 *University*. 1998;10:139-143.
- 268 15. Singh JM, Dash B. Analysis of genetic variability and character association in maize. *African*
269 *Crop Science Journal*. 2000; 5: 1-8.
- 270 16. Murtadha S, Ariyo OJ, Kehinde OB. Character association of seed yield and its components
271 in okra [*Abelmoschus esculentus* (L.) Moench]. *Ogun Journal of Agricultural*
272 *Science*. 2004;3: 222-233.
- 273 17. Ahmadikhah A. Study on selection effect, genetic advance and genetic parameters in
274 rice. *Annals of Biological Research*. 2010;4: 45-51.
- 275 18. Dutta P, Partha ND, Borua PK. Morphological Traits as Selection Indices in Rice: A
276 Statistical View *Universal Journal of Agricultural Research*. 2013;3: 85-96.
- 277 19. Ukaoma AA, Iwunor OP, Ijeoma OR, (Heritability and character correlation among some
278 rice genotypes for yield and yield components. *Journal of Plant Breeding and*
279 *Genetics*. 2013; 2: 73-84.
- 280 20. Sedeek SEM, Hammoud SA, Ammar MH, Metwally TF. Genetic variability, heritability,
281 genetic advance and cluster analysis for some physiological traits and grain yield and
282 its components in rice (*Oryza sativa* L.). *Journal of Agricultural Science*. 2009; 35:
283 858-878.
- 284 21. Ibrahim MM, Hussein RM, Variability, heritability and genetic advance in some genotypes
285 of roselle (*Hibiscus sabdariffa* L.) *World Journal of Agricultural Science*. 2006;2:
286 340-345.
- 287 22. Sinha AK, Mishra PK. Morphology based multivariate analysis of phenotypic diversity of
288 landraces of rice (*Oryza sativa* L.) of Bankura district of West Bengal. *Journal of*
289 *Crop and Weed*. 2013;9: 115-121.
- 290 23. Maji TA, Shaibu AA. Application of principal component analysis for rice germplasm
291 characterization and evaluation. *Journal of Plant Breeding and Crop Science* 2012;4
292 :87-93.

- 293 24. Banumathy S, Manimaran R, Sheeba A, Manivannan N, Ramya B, Kumar D,
294 Ramasubramanian GV. Genetic diversity analysis of rice germplasm lines for yield
295 attributing traits. *Electronic Journal of Plant Breeding*. 2010;1: 500-504.
- 296 25. Thompson JA, Nelson RL, Vodkin LO Identification of diverse soybean germplasm using
297 RAPD markers. *Crop Science*. 1998;38: 1348-1355.
- 298 26. Lombard V, Baril CP, Dubreuil P, Blouet F, Zhang D. Genetic relationships and
299 fingerprinting of rapeseed cultivars by AFLP: consequences for varietal registration.
300 *Crop Science*. 2000;40: 1417-1425.
- 301 27. Mohammadi SA, Prasanna BM Analysis of genetic diversity in crop plants—salient
302 statistical tools and considerations. *Crop Science*. 2003;43: 1235-1248.
- 303 28. Ringnér M. What is principal component analysis?. *Nature biotechnology*. 2008; 26: 303-
304 304.
- 305 29. Gana AS, Shaba SZ, Tsado EK, Principal component analysis of morphological traits in
306 thirty-nine accessions of rice (*Oryza sativa* L.) grown in a rainfed lowland ecology of
307 Nigeria. *Journal of Plant Breeding and Crop Science*. 2013; 4: 120-126.

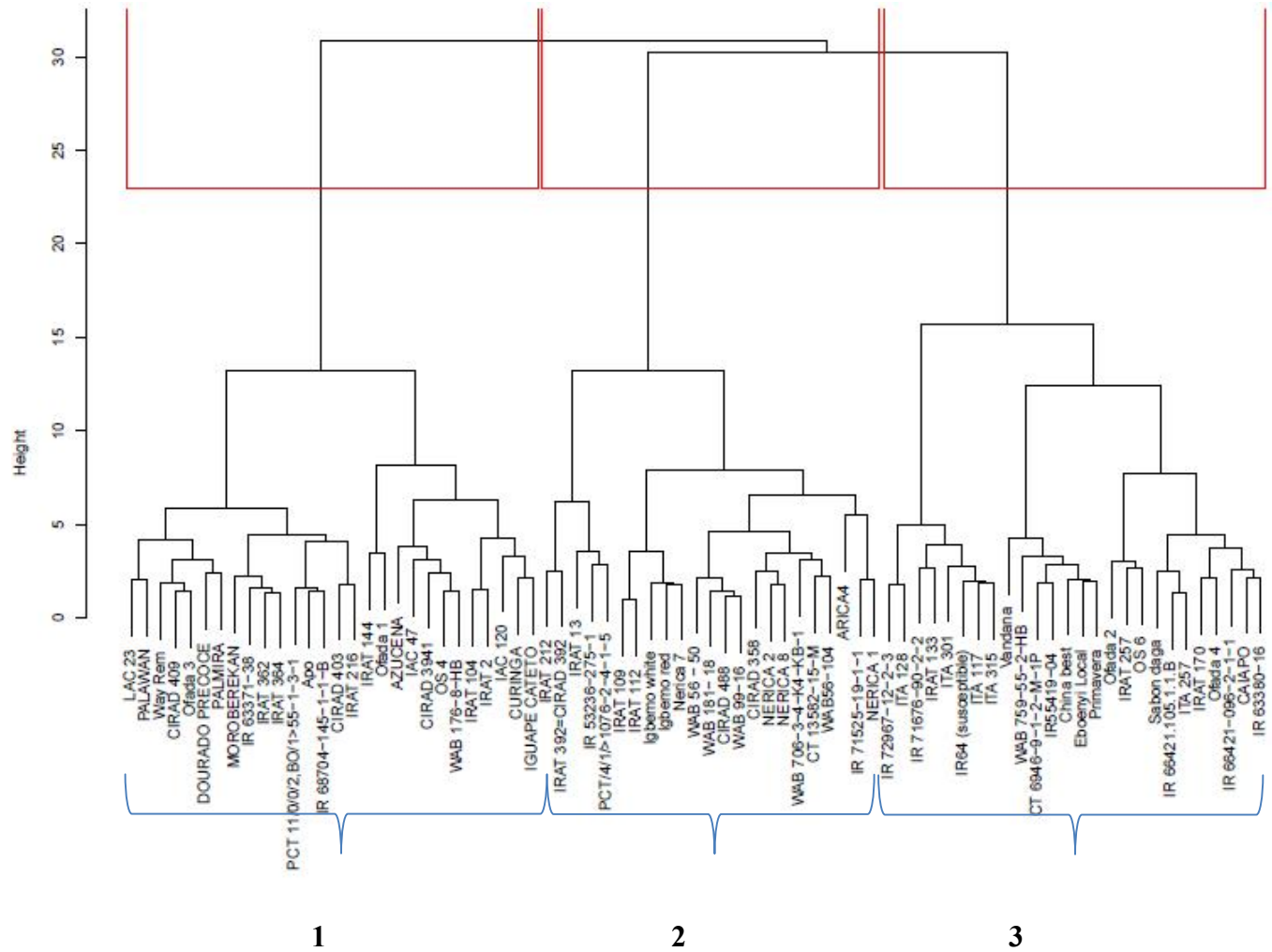


Fig 1 Dendrogram of 77 upland rice genotypes based on 10 morphological traits

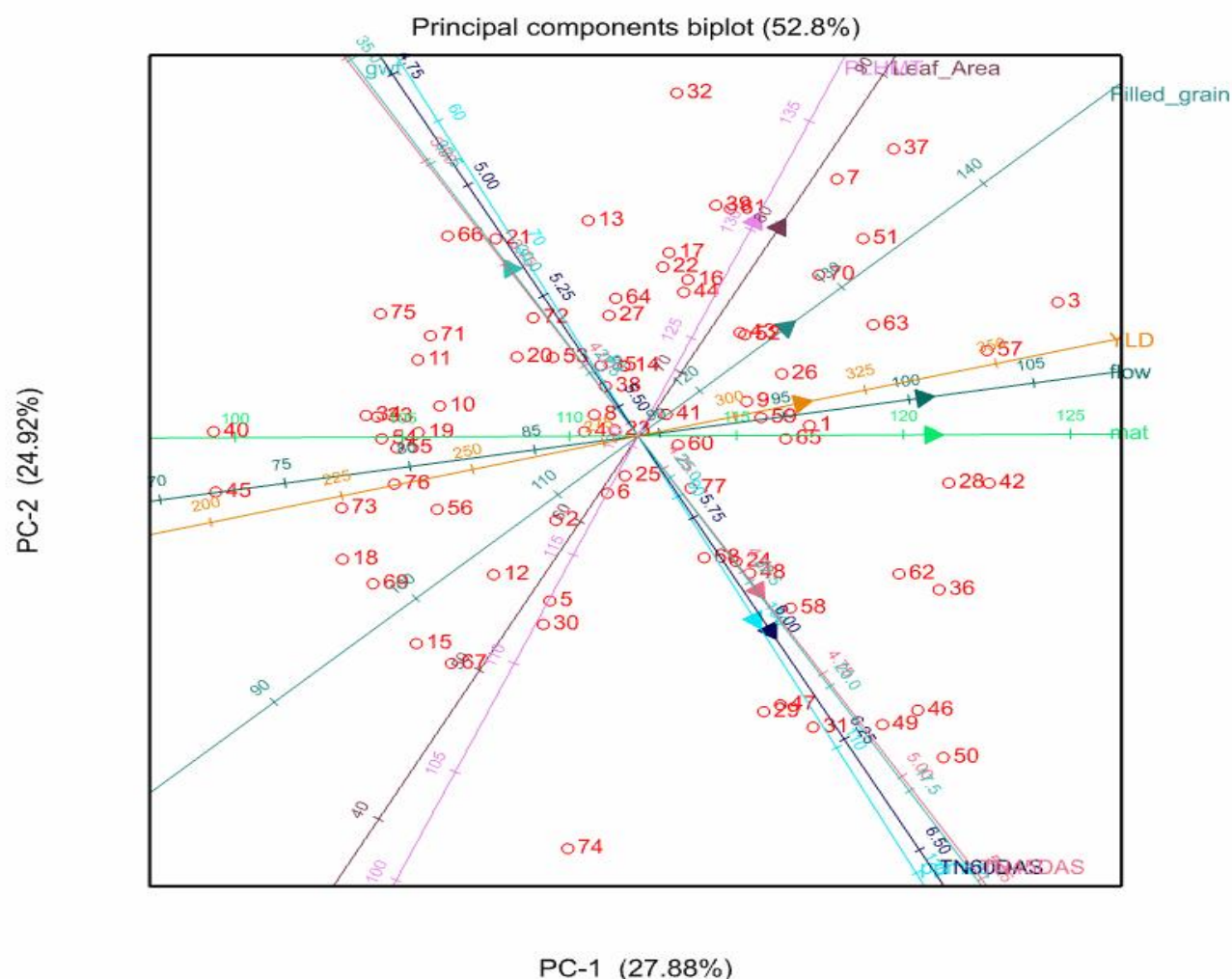


Fig 2 Biplot graphical display of the measured traits in 77 upland rice genotypes.

Table 1 List of rice germplasm and source

| S.No | Germplasm | Origin/Source | S.No | Germplasm | Origin/Source |
|------|---------------|---------------|------|----------------------------|---------------|
| 1 | AZUCENA | Philippines | 40 | MOROBEREKAN | Cote d'Ivoire |
| 2 | CAIAPO | Brazil | 41 | OS 4 | Nigeria |
| 3 | CIRAD 358 | Cote d'Ivoire | 42 | OS 6 | Nigeria |
| 4 | CIRAD 394 | Madagascar | 43 | PALAWAN | Phillipines |
| 5 | CIRAD 403 | Brazil | 44 | PALMIRA | Costa Rica |
| 6 | CIRAD 409 | Columbia | 45 | PCT 11/0/0/2,BO/1>55-1-3-1 | Columbia |
| 7 | CIRAD 488 | Madagascar | 46 | PCT/4/1/>1076-2-4-1-5 | Columbia |
| 8 | CT 13582-15-M | CIAT | 47 | WAB 176-8-HB | AfricaRice |

| | | | | | |
|----|--------------------|---------------|----|---------------------|-------------------|
| 9 | CT 6946-9-1-2-M-1P | CIAT | 48 | WAB 706-3-4-K4-KB-1 | AfricaRice |
| 10 | CURINGA | Brazil | 49 | WAB 99-16 | AfricaRice |
| 11 | DOURADO PRECOCE | Cote d'Ivoire | 50 | Primavera | Brazil |
| 12 | IAC 120 | Brazil | 51 | WAB 759-55-2-HB | AfricaRice |
| 13 | IAC 47 | Brazil | 52 | NERICA 7 | AfricaRice |
| 14 | WAB 181- 18 | AfricaRice | 53 | IRAT 109 | Cote d'Ivoire |
| 15 | IGUAPE CATETO | Brazil | 54 | ARICA4 | AfricaRice |
| 16 | IR 53236-275-1 | IRRI | 55 | Way Rem | Indonesia |
| 17 | IR 63371-38 | IRRI | 56 | Vandana | India |
| 18 | IR 63380-16 | IRRI | 57 | Apo | Philippines |
| 19 | WAB 56 – 50 | AfricaRice | 58 | WAB56-104 | AfricaRice |
| 20 | IR 66421.105.1.1.B | IRRI | 59 | IR64 | IRRI |
| 21 | IR 66421-096-2-1-1 | IRRI | 60 | Sabon Daga | Nigeria |
| 22 | IR 68704-145-1-1-B | IRRI | 61 | ITA 117 | IITA |
| 23 | IR 71525-19-1-1 | IRRI | 62 | ITA 128 | IITA |
| 24 | IR 71676-90-2-2 | IRRI | 63 | ITA 257 | IITA |
| 25 | IR 72967-12-2-3 | IRRI | 64 | ITA 301 | IITA |
| 26 | IRAT 104 | Cote d'Ivoire | 65 | ITA 315 | IITA |
| 27 | IRAT 112 | Cote d'Ivoire | 66 | Ofada 1 | Nigeria_ landrace |
| 28 | IRAT 13 | Cote d'Ivoire | 67 | Ofada 2 | Nigeria_ landrace |
| 29 | IRAT 144 | Cote d'Ivoire | 68 | Ofada 3 | Nigeria_ landrace |
| 30 | IRAT 170 | Cote d'Ivoire | 69 | Ofada 4 | Nigeria_ landrace |
| 31 | IRAT 2 | Senegal | 70 | Igbemo White | Nigeria_ landrace |
| 32 | IRAT 212 | Cote d'Ivoire | 71 | Igbemo Red | Nigeria_ landrace |
| 33 | IRAT 216 | Cote d'Ivoire | 72 | China Best | China |
| 34 | IRAT 257 | Brazil | 73 | Ebonyi Local | Nigeria_ landrace |
| 35 | IRAT 362 | Nicaragua | 74 | NERICA 1 | AfricaRice |
| 36 | IRAT 364 | Nicaragua | 75 | NERICA 2 | AfricaRice |
| 37 | IRAT 392=CIRAD 392 | Madagascar | 76 | NERICA 8 | AfricaRice |
| 38 | LAC 23 | Liberia | 77 | IR55419-04 | IRRI |
| 39 | IRAT 133 | Cote d'Ivoire | | | |

316

317

318

Table 2 Genetic variance of 10 morphological characteristics

| Traits | Minimum | Mean | Maximum | V _p | V _g | V _e | PCV (%) | GCV (%) | h ² _B (%) | GA (%) | Std. Dev |
|---------|---------|--------|---------|----------------|----------------|----------------|---------|---------|---------------------------------|--------|----------|
| GY | 96.92 | 281.63 | 434.2 | 13807 | 6599.8 | 6870.4 | 41.72 | 28.85 | 47.80 | 41.08 | 81.24 |
| TGW | 19.22 | 25.99 | 37.4 | 26.3 | 23.33 | 2.97 | 19.73 | 18.58 | 88.71 | 36.06 | 4.83 |
| DTF | 70.23 | 89.15 | 105 | 94.81 | 82.17 | 11.89 | 10.92 | 10.16 | 86.67 | 19.50 | 9.06 |
| DM | 99.43 | 112.06 | 125.6 | 66.8 | 48.09 | 18.46 | 7.29 | 6.19 | 71.98 | 10.82 | 6.94 |
| PHT | 101.99 | 120.48 | 139.7 | 364.46 | 110.36 | 250.56 | 15.86 | 8.72 | 30.28 | 9.88 | 10.51 |
| NP | 4.99 | 6.29 | 7.7 | 3.63 | 0.85 | 2.21 | 30.29 | 14.66 | 23.41 | 14.61 | 0.92 |
| TN60DAS | 4.47 | 5.45 | 6.3 | 2.41 | 0.37 | 1.94 | 28.48 | 11.16 | 15.16 | 8.89 | 0.60 |
| LA | 41.25 | 65.74 | 102.4 | 377.3 | 159.63 | 133.75 | 29.55 | 19.22 | 42.31 | 25.75 | 12.63 |
| NPM | 38.73 | 85.13 | 134 | 445.09 | 284.38 | 139.83 | 24.78 | 19.81 | 63.89 | 32.62 | 16.86 |
| FG | 86.28 | 115.66 | 184 | 1467.00 | 480.2 | 966.90 | 33.12 | 18.94 | 32.73 | 22.33 | 21.91 |

GY=Yield per meter square, TGW= 1000grain weight, DTF= Days to 50% flowering, DM= Days to 85% maturity, PHT = Plant height at maturity, PN= Number of panicles per plant, TN60DAS=Tiller number at 60days after sowing, LA=Average leaf area, NPM= Number of panicles per meter square, FG= Number filled grains.
Replications = 4, n =77

327 **Table 3** Correlation coefficients among 10 quantitative traits of 77 upland rice cultivars

| | TGW | DTF | DM | PHT | TN45DAS | TN60DAS | LA | NPM | FG |
|----------------|-----|---------|---------|--------|---------|---------|--------|---------|--------|
| GY | 0 | 0.22** | 0.21** | 0.07 | 0.12* | 0.13* | 0.09 | 0.25** | 0.05 |
| TGW | | -0.26** | -0.26** | 0.22** | -0.07 | -0.20** | 0.15* | -0.25** | -0.08 |
| DTF | | | 0.82** | 0.17* | 0.02 | 0.12* | 0.26** | 0.07 | 0.14* |
| DM | | | | 0.18* | 0.05 | 0.16* | 0.18* | 0.16* | 0.17* |
| PHT | | | | | -0.15* | -0.20** | 0.33** | -0.18* | 0.27** |
| TN45DAS | | | | | | 0.61** | 0.06 | 0.05 | -0.16* |
| TN60DAS | | | | | | | -0.08 | 0.18* | -0.09 |
| LA | | | | | | | | -0.20** | 0.12* |
| NPM | | | | | | | | | 0.01 |

328 GY=Yield per meter square, TGW= 1000grain weight, DTF= Days to 50% flowering, DM= Days to 85% maturity,
 329 PHT = Plant height at maturity, PN= Number of panicles per plant, TN45DAS=Tiller number at 45days after
 330 sowing, TN60DAS=Tiller number at 60days after sowing, LA=Average leaf area, NPM= Number of panicles per
 331 meter square, Number filled grains.

332 *, ** = Significant at 5 and 1% probability levels, respectively

Table 4 Principal component analysis of 10 agro-morphological characters for 77 upland rice cultivars.

| Variable | PC1 | PC2 | PC3 |
|----------------|-------|-------|-------|
| LA | 0.29 | 0.41 | 0.20 |
| PHT | 0.23 | 0.45 | 0.24 |
| TN45DAS | 0.10 | -0.30 | 0.60 |
| TN60DAS | 0.21 | -0.43 | 0.30 |
| GY | 0.32 | -0.01 | 0.34 |
| DTF | 0.52 | 0.03 | -0.33 |
| TGW | -0.20 | 0.37 | 0.33 |
| DM | 0.53 | -0.05 | -0.30 |
| NPM | 0.18 | -0.41 | 0.07 |
| FG | 0.29 | 0.20 | 0.13 |
| Eigenvalue | 2.76 | 2.49 | 1.20 |
| Variation (%) | 27.60 | 24.93 | 12.02 |
| Cumulative (%) | 27.60 | 52.53 | 64.55 |

333 GY=Yield per meter square, TGW= 1000grain weight, DTF= Days to 50% flowering, DM= Days to 85% maturity,
 334 PHT = Plant height at maturity, PN= Number of panicles per plant, TN45DAS=Tiller number at 45days after
 335 sowing, TN60DAS=Tiller number at 60days after sowing, LA=Average leaf area, NPM= Number of panicles per
 336 meter square, FG= Number filled grains.